

Sol koroner arter kalsifik kronik total  
oklüzyonuna anterograd yaklaşımla başarılı  
perkütan girişim

Dr. Sinan CERŞİT

Kartal Koşuyolu Yüksek İhtisas Eğitim ve Araştırma  
Hastanesi

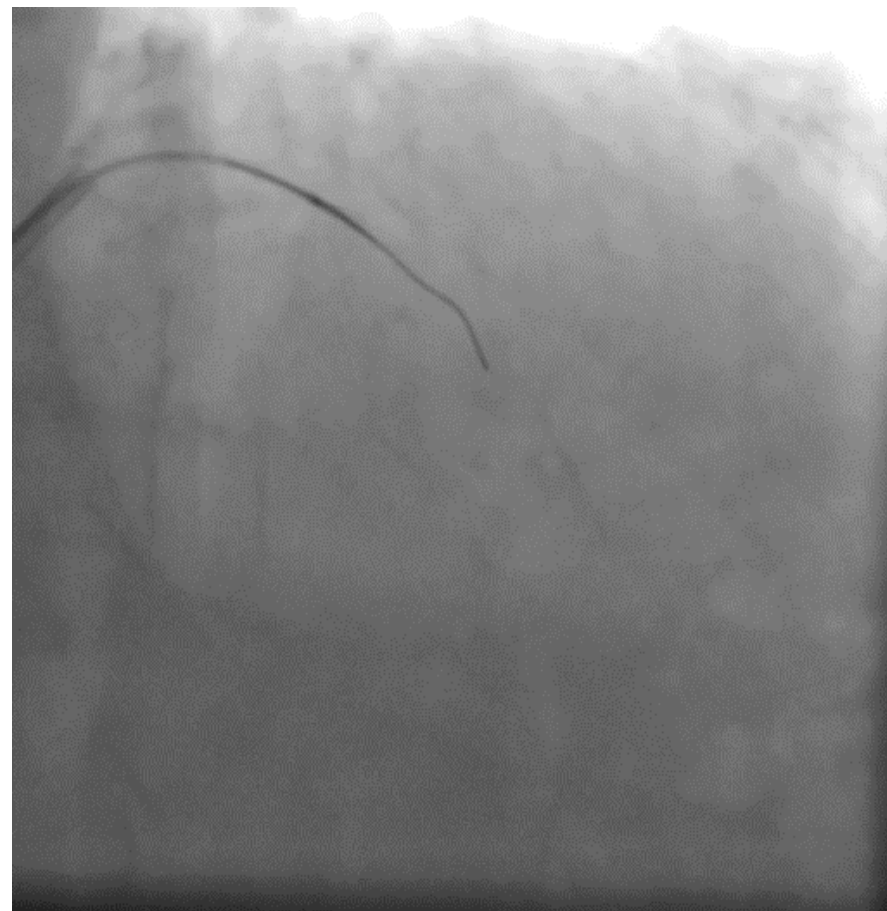
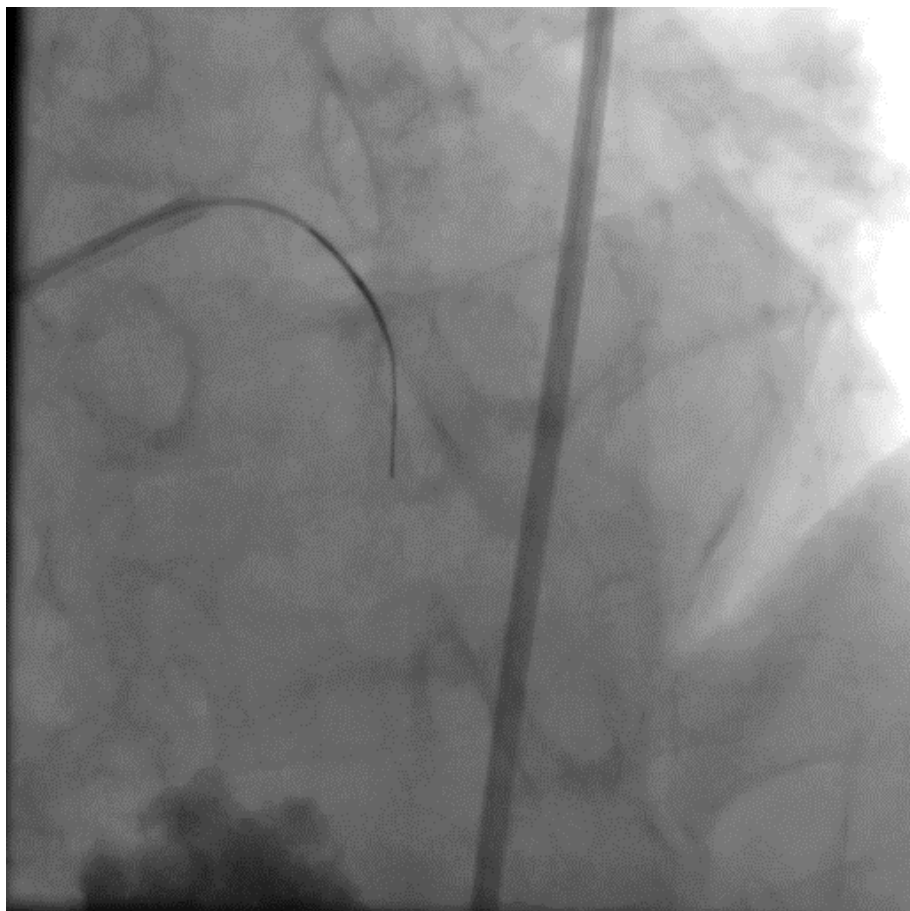
# Anamnez

- 70,E
- HT+,HL+
- Dört aydır devam eden eforla artan göğüs ağrısı
- MPS: LV EF % 45 ve anterior alanda reversibl perfüzyon defekti

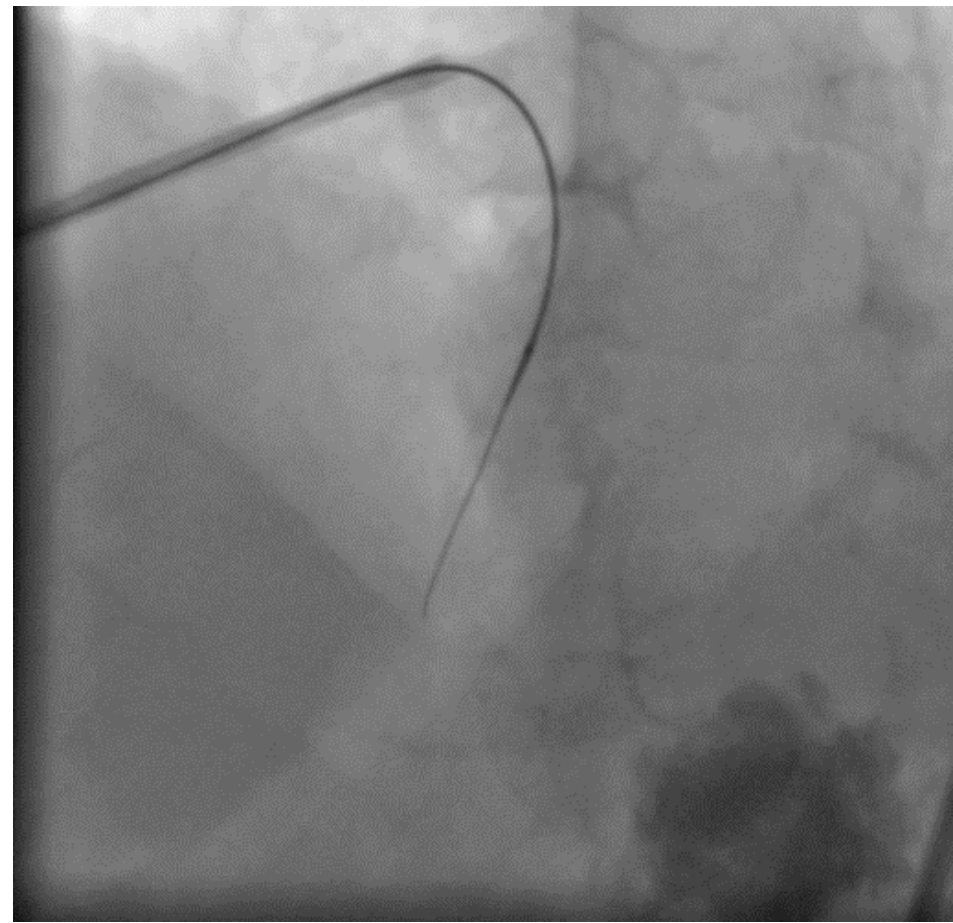
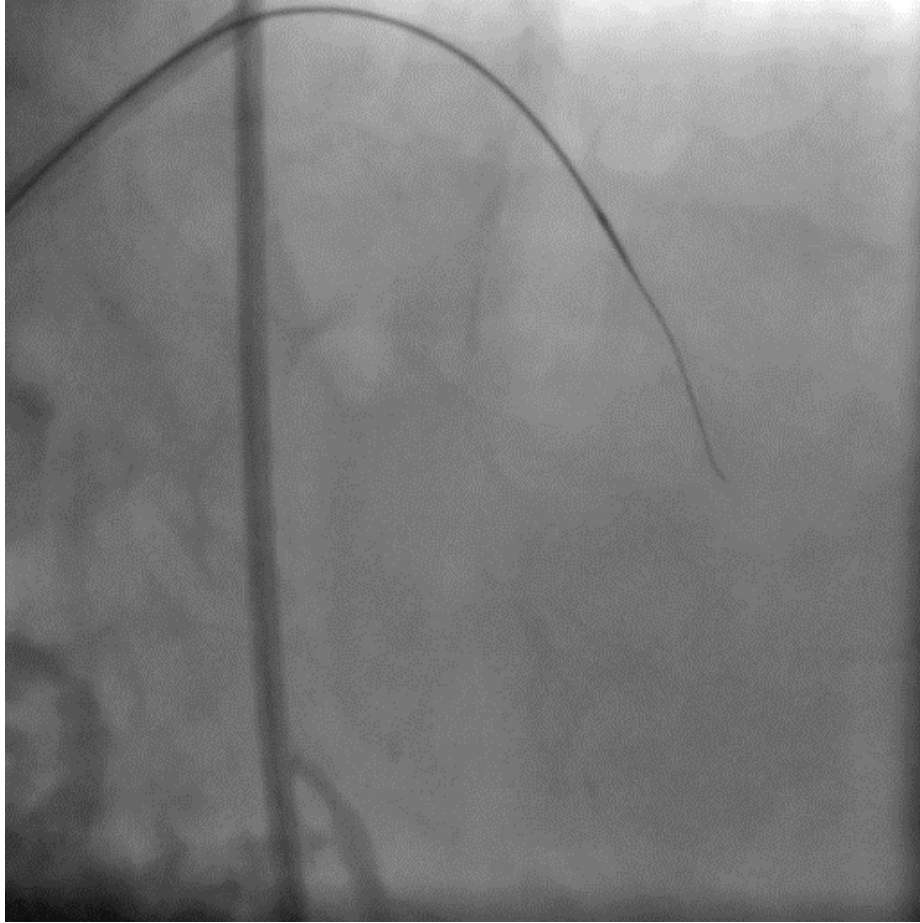
# Koroner anjiyografi



Gaia second, third, conquest 12...



# Astato 20 periferik tel



1.0\*15 mm artemis cto balon, 2.5\*15 mm nc balon,



3.0\*28 mm promus stent, 3.5\*15 mm nc balon ile  
postdilatasyon

