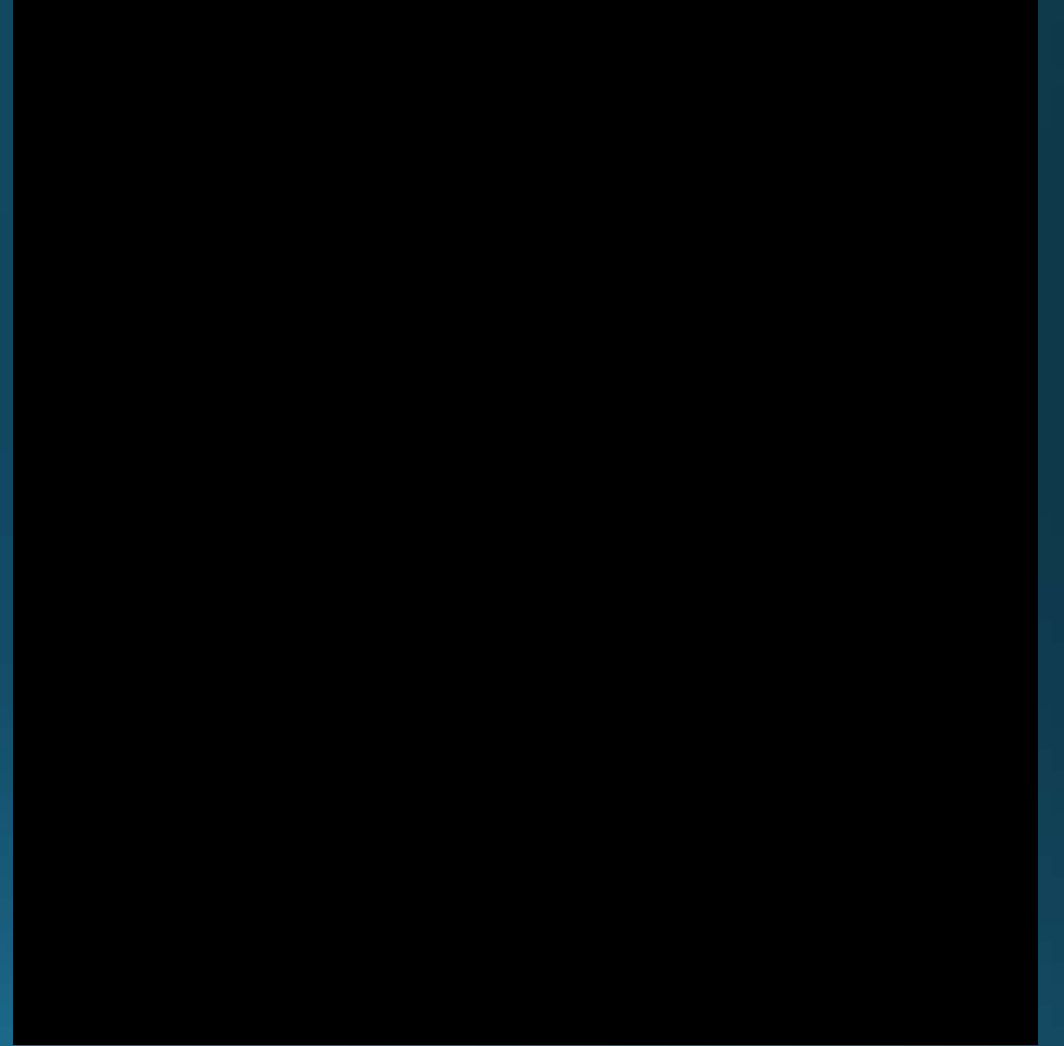
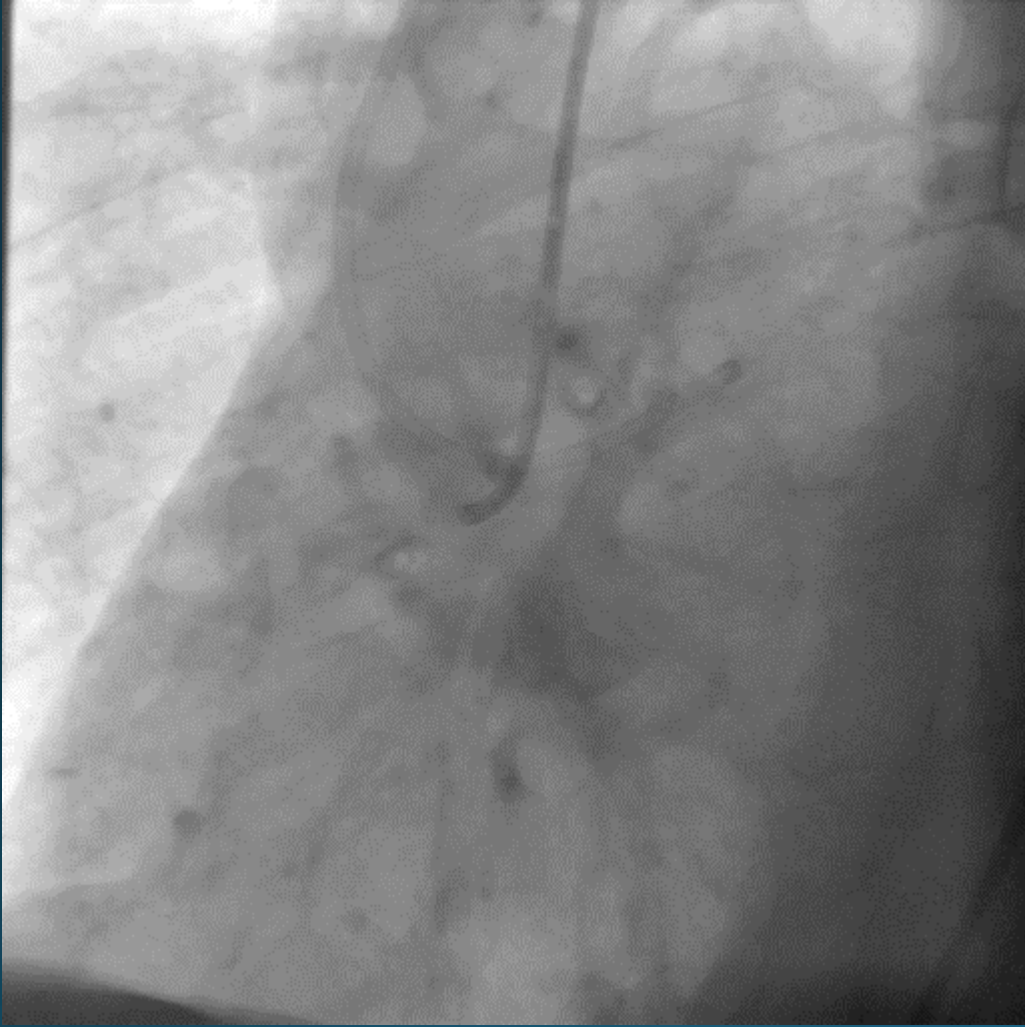
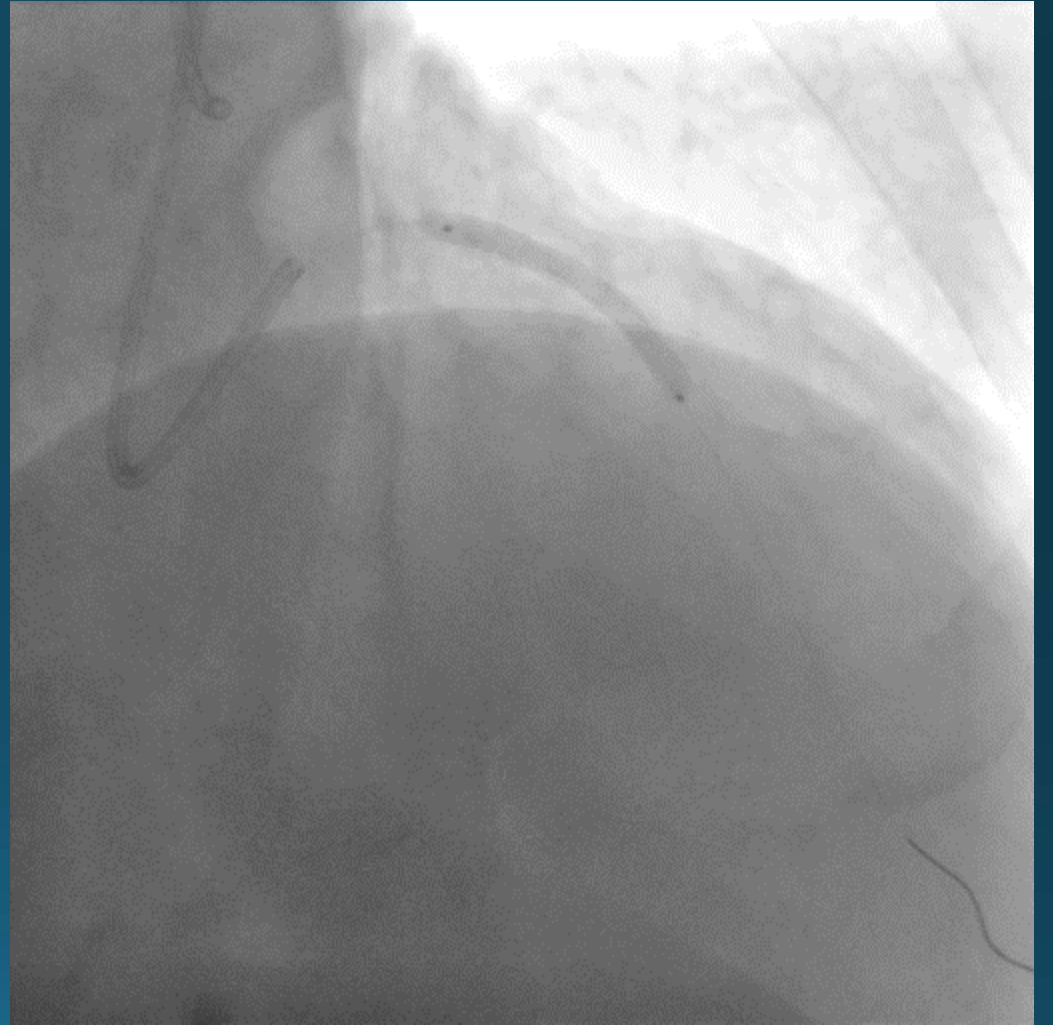
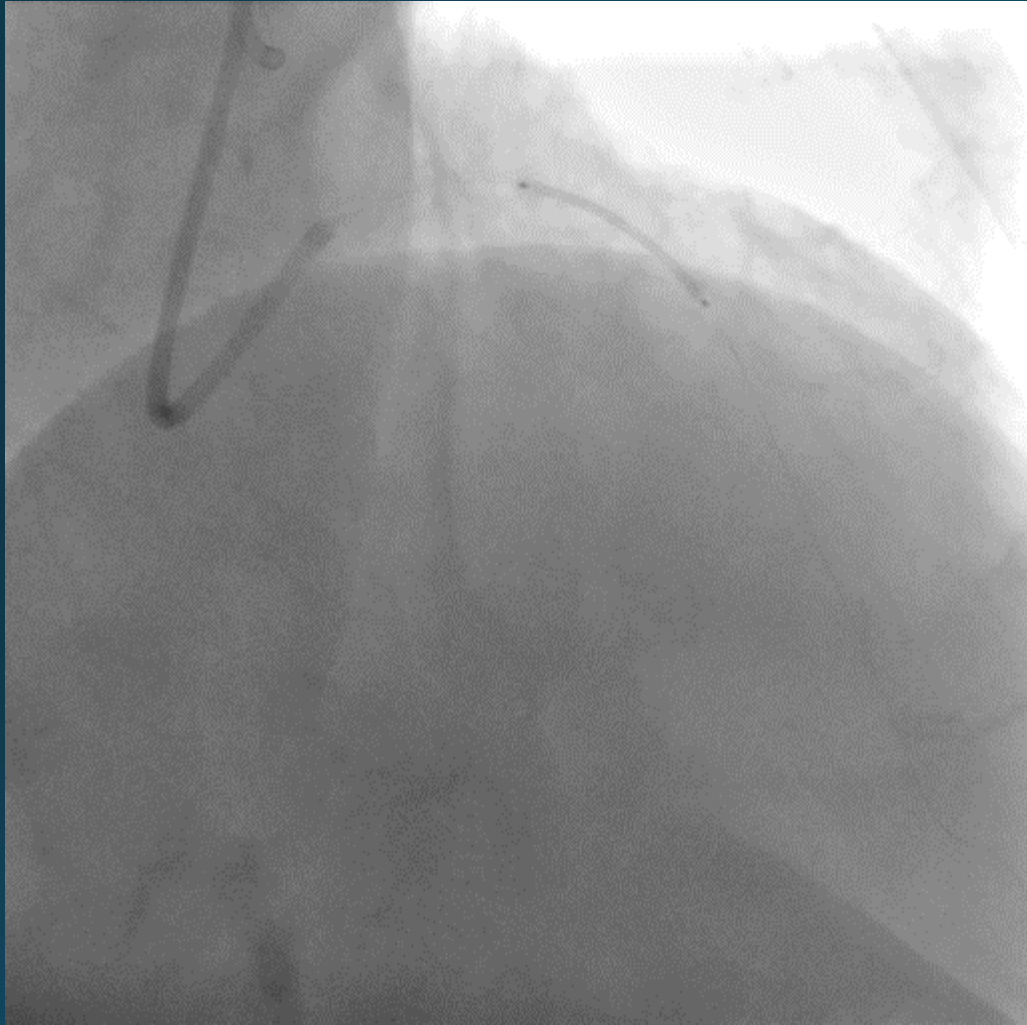
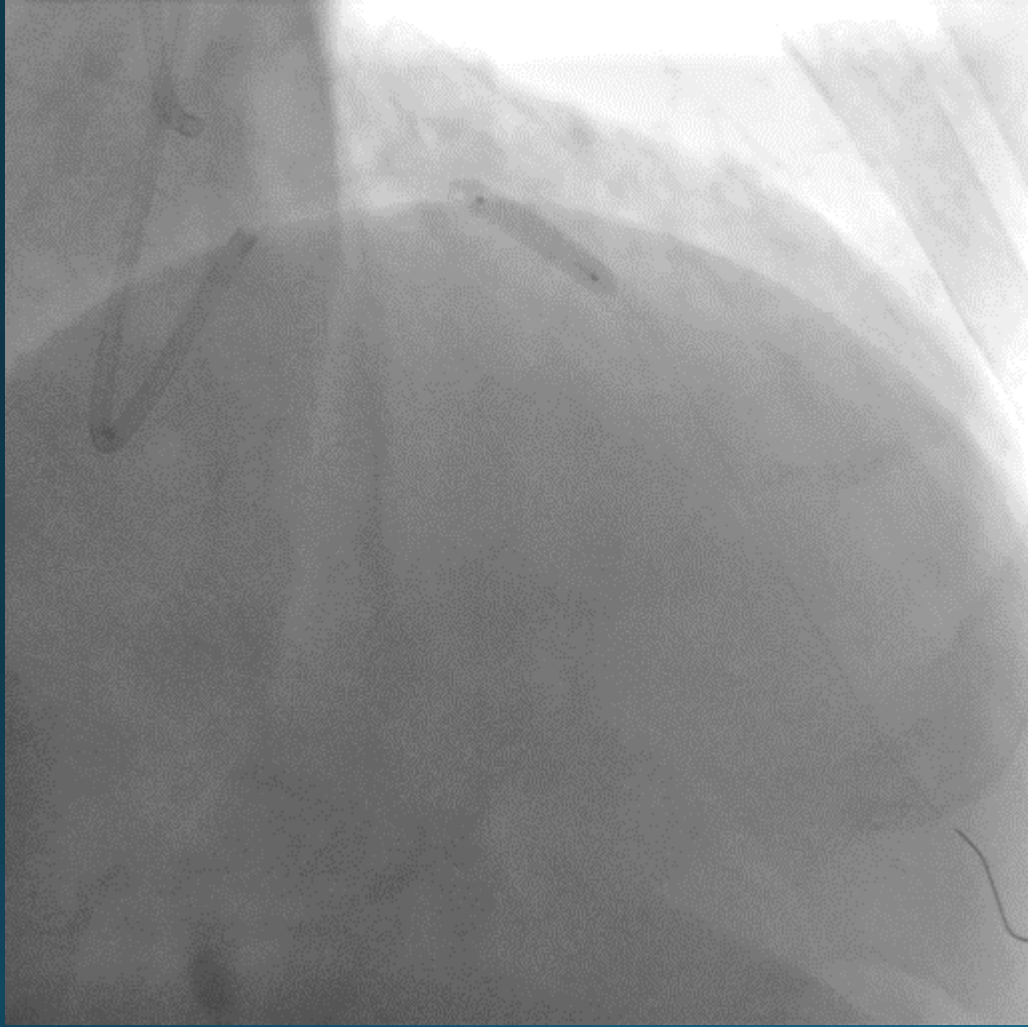


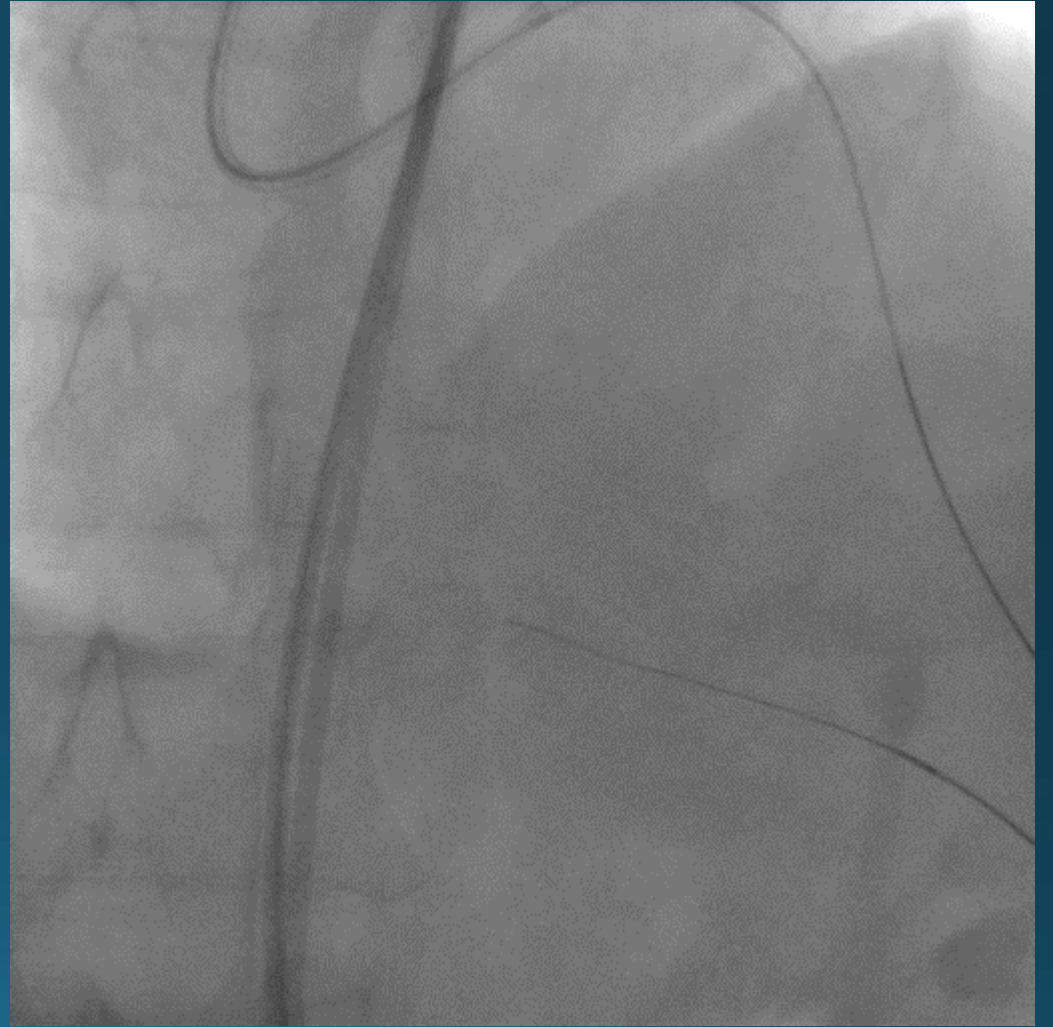
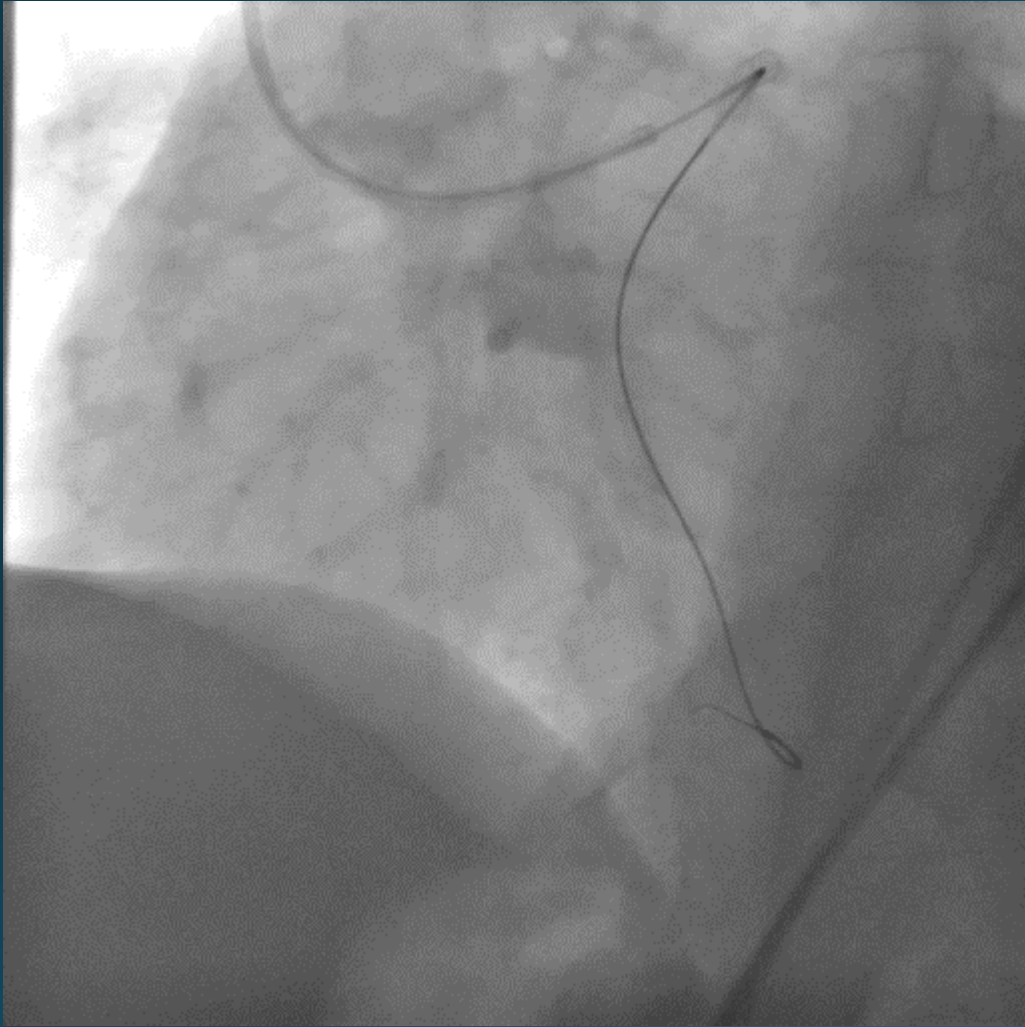
CTO VAKA
DR ALEV KILIÇGEDİK
KARTAL KOŞUYOLU YÜKSEK İHTİSAS EĞİTİM VE
ARAŞTIRMA HASTANESİ

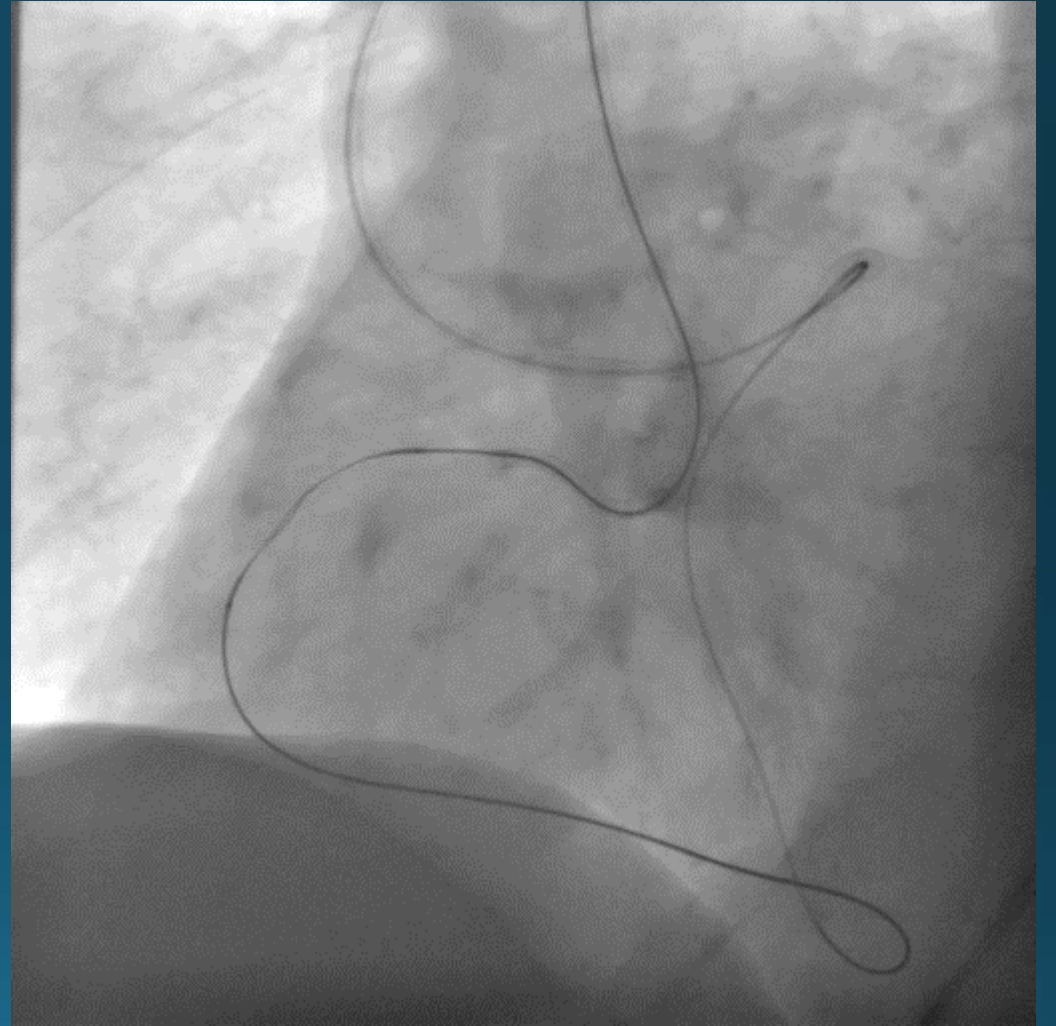
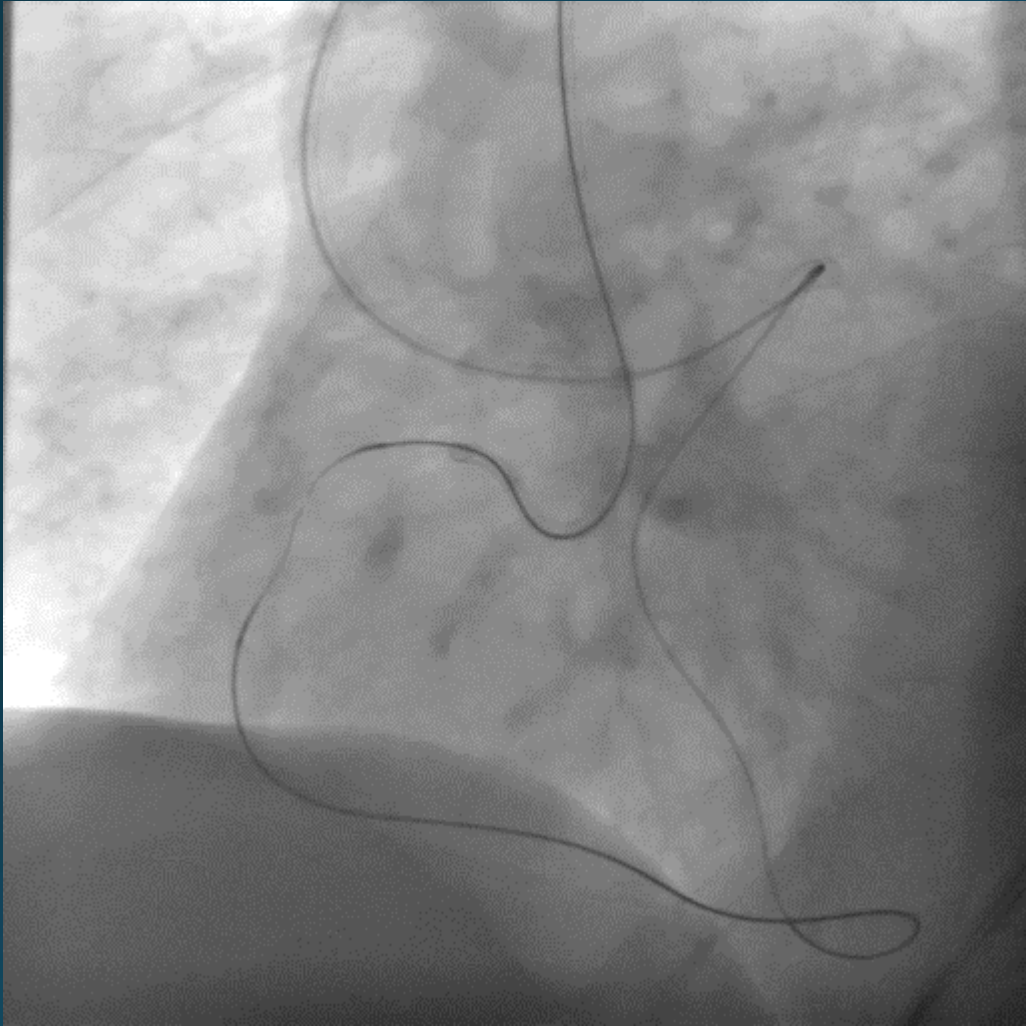
- G.Ö. 59 Y Erkek Hasta
- SAP CLASS III şikayet ile başvurdu.
- EKG: sinüs ritm 81/dk
- Ekokardiyografi: LVEF: %65, SDD1, mitral yetersizliği hafif , aort yetersizliği eser
- KAG: LAD %70, CX %70 ve RCA %100 (retrograd doluyor)-> CABG
- CABG yi kabul etmedi.

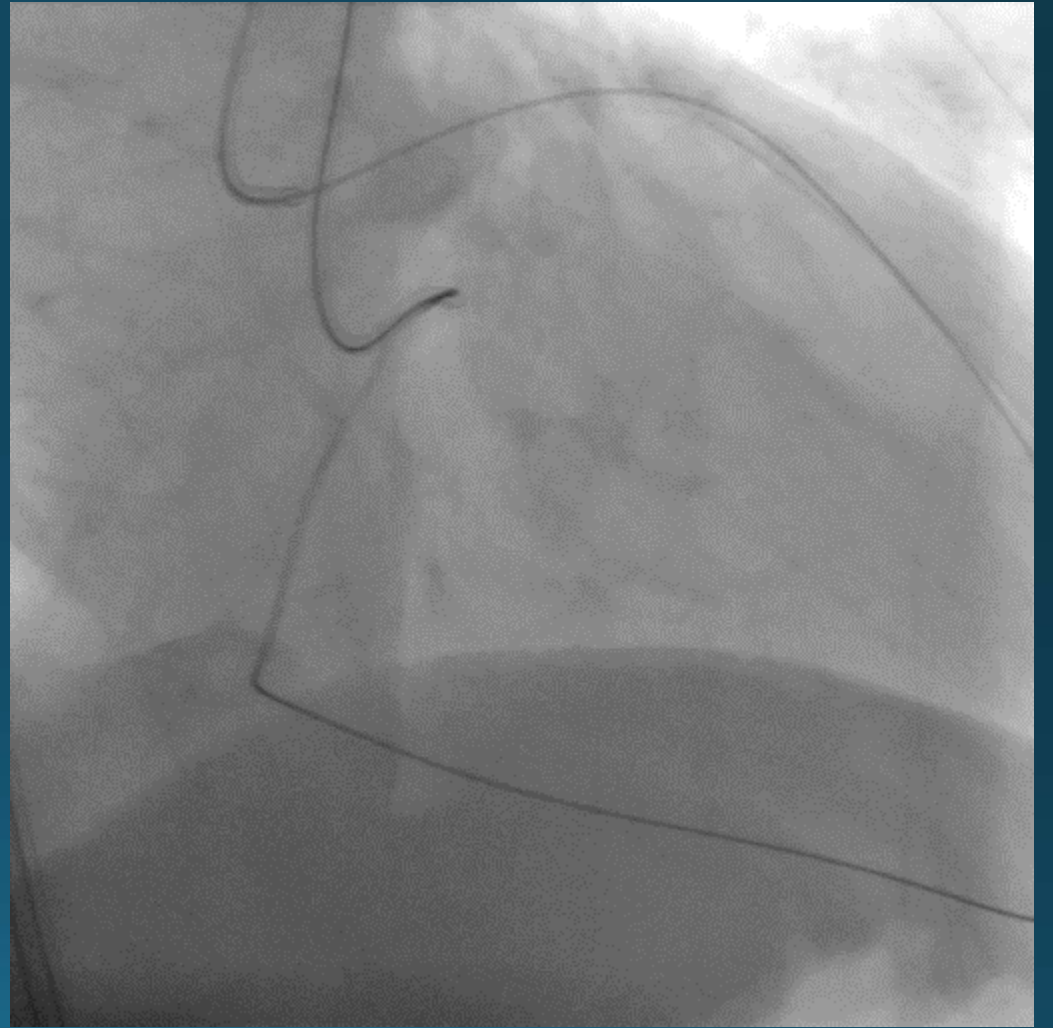
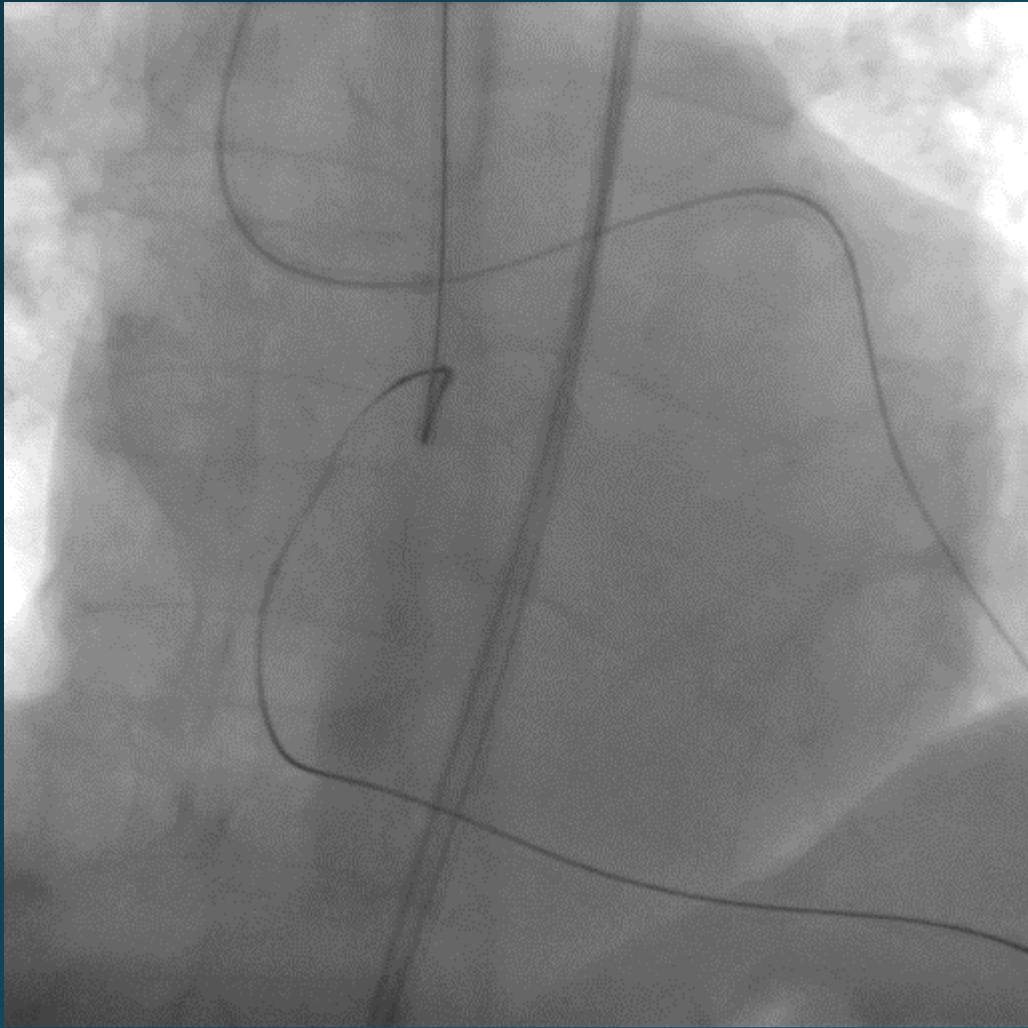


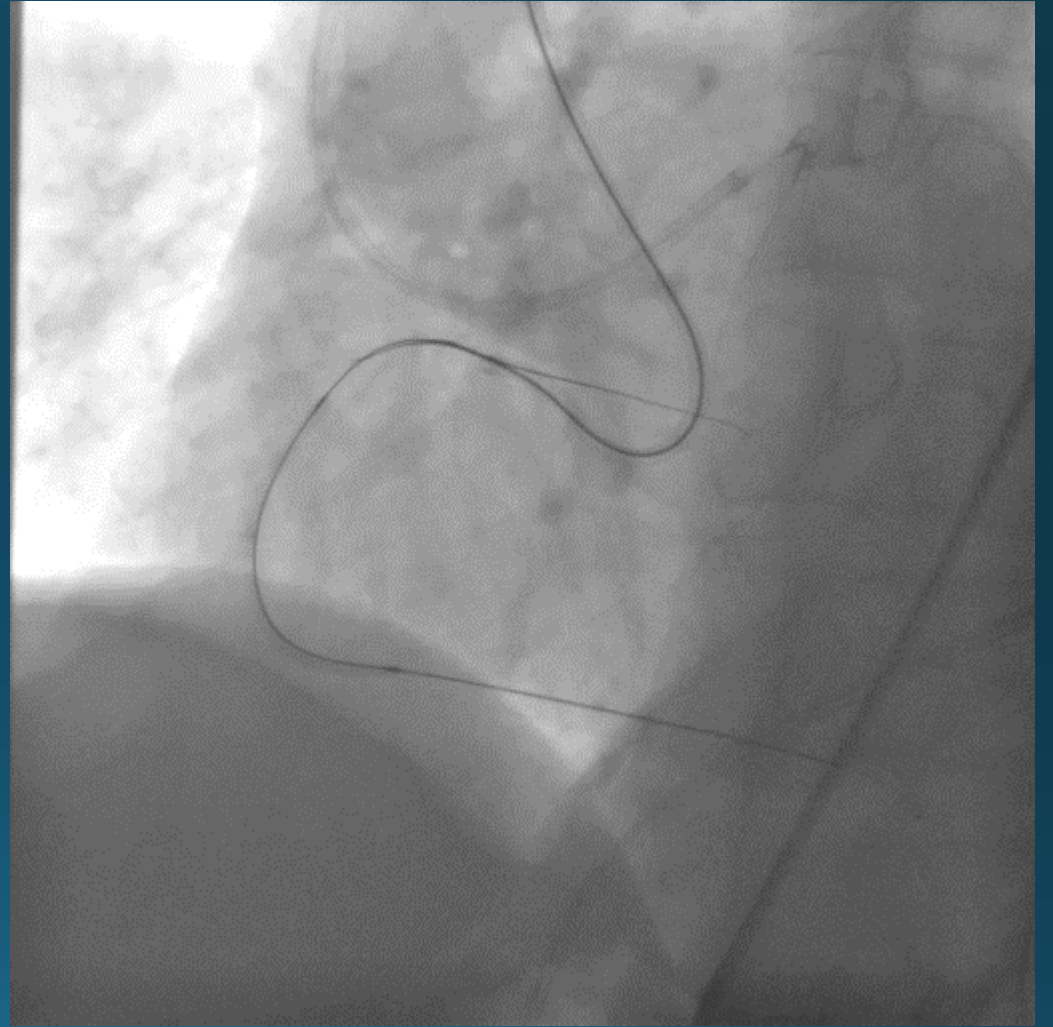
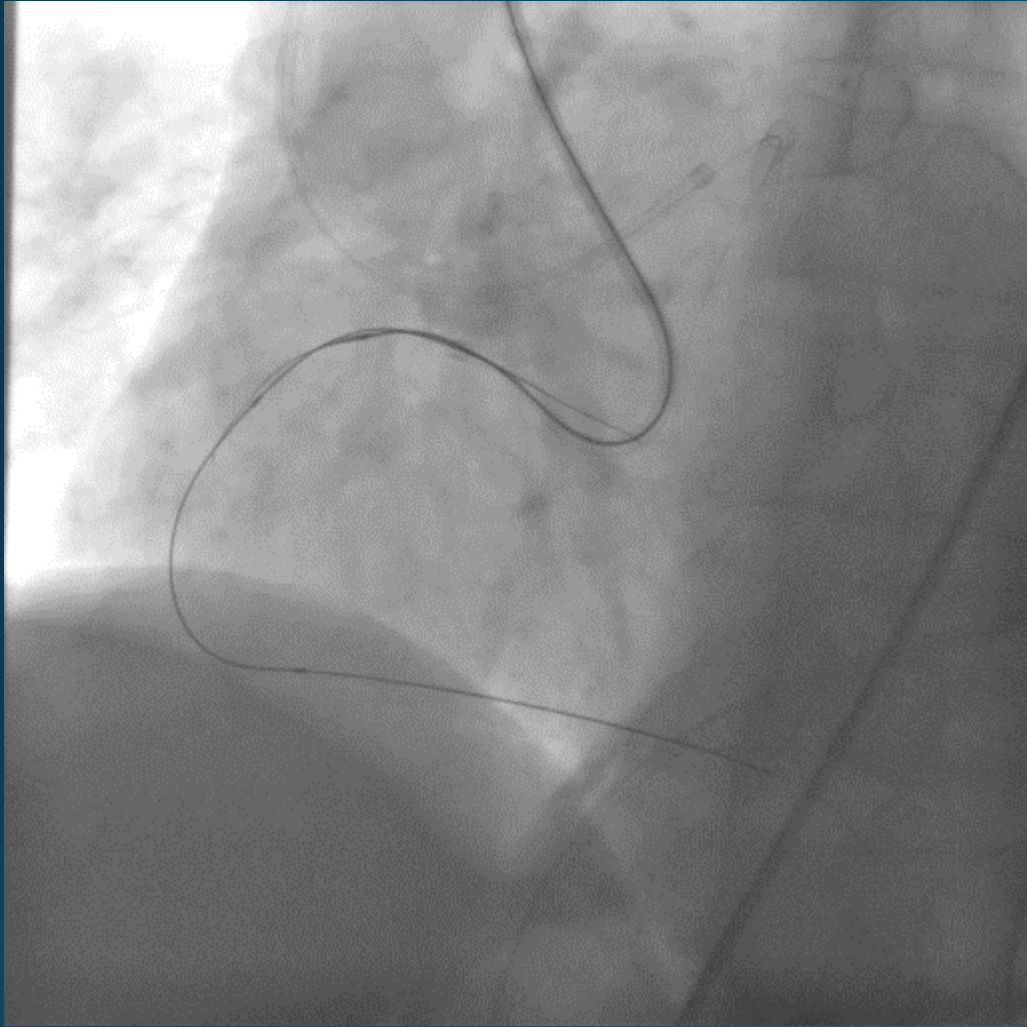


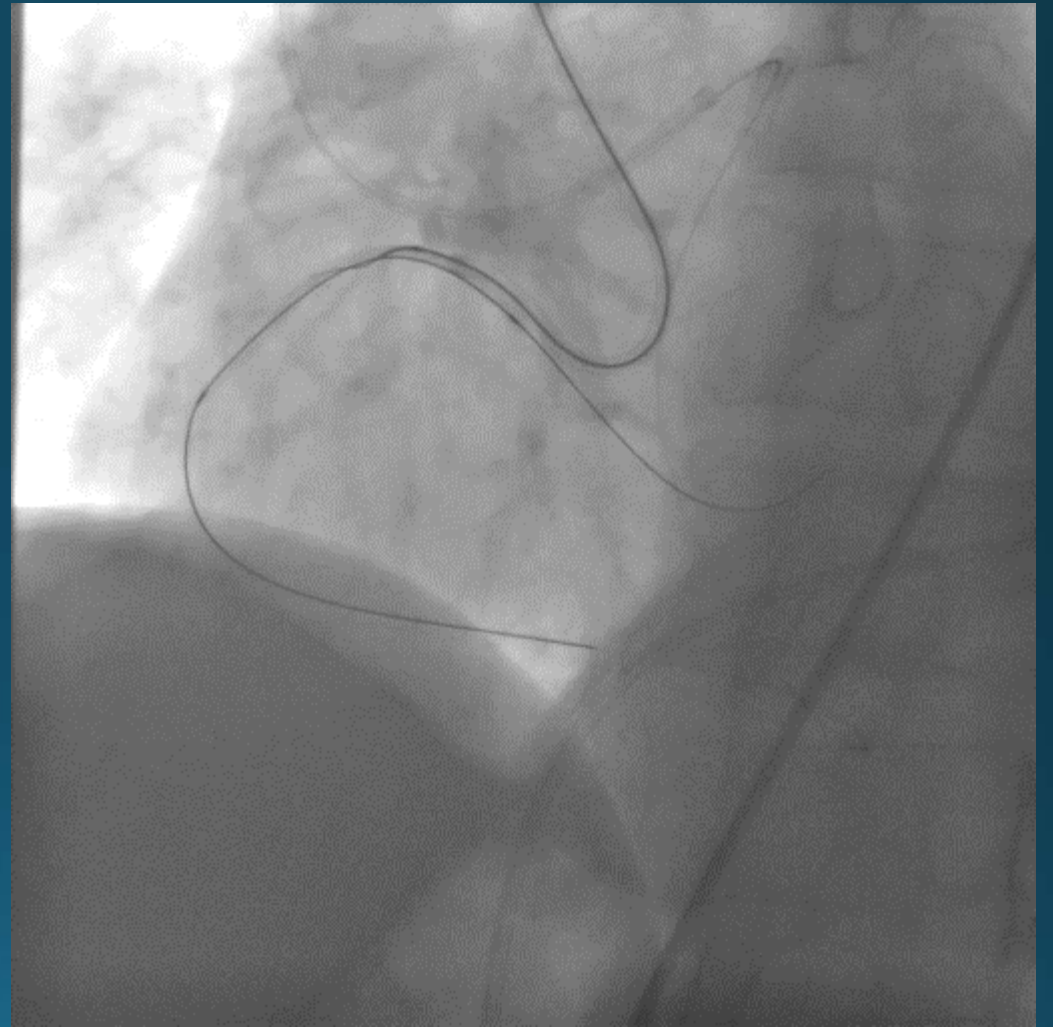
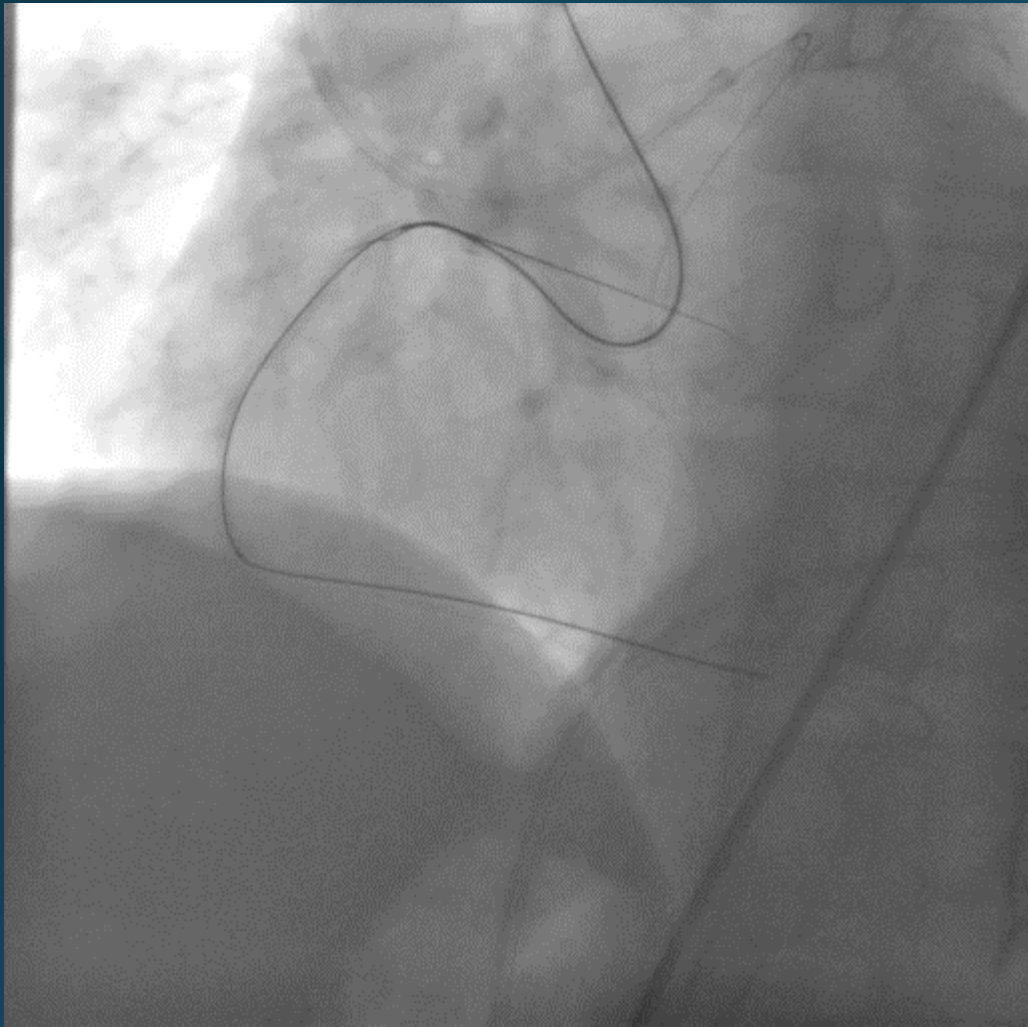


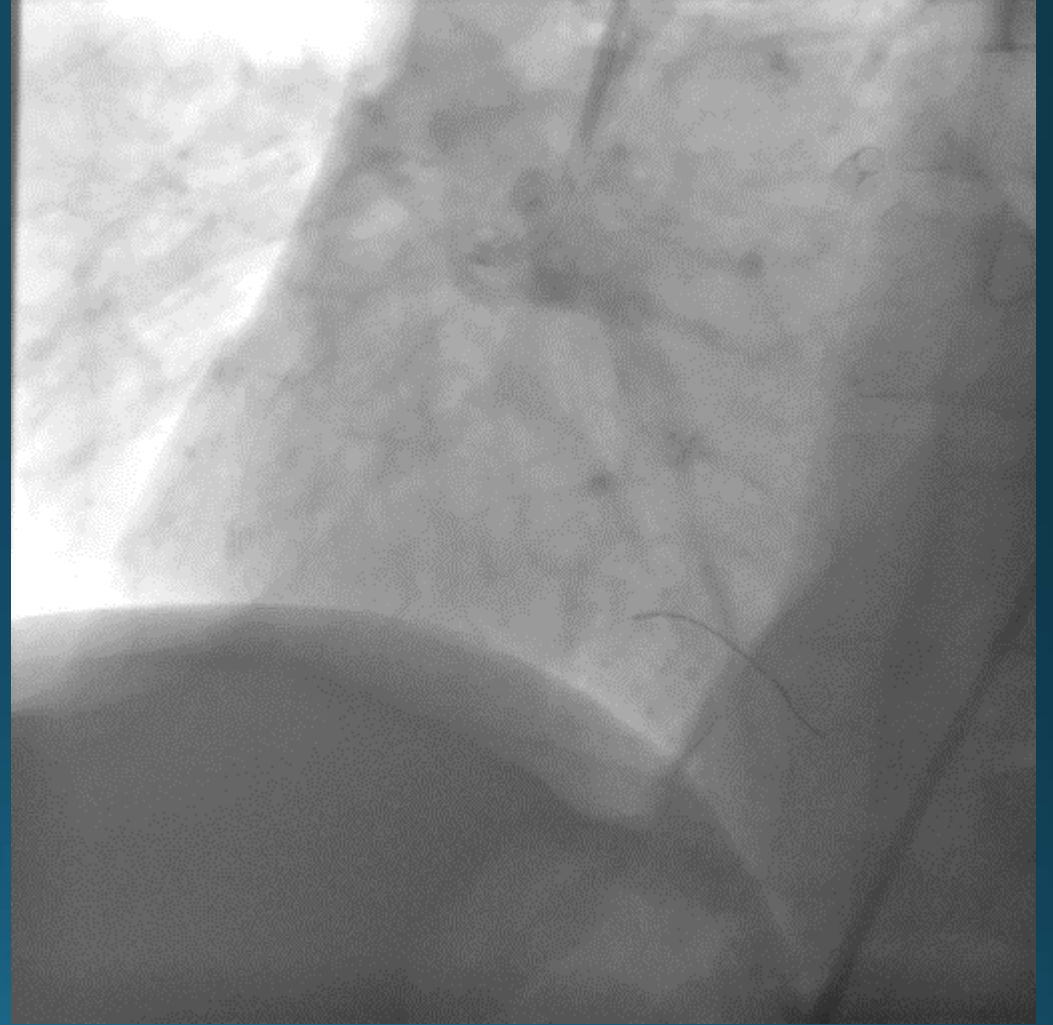
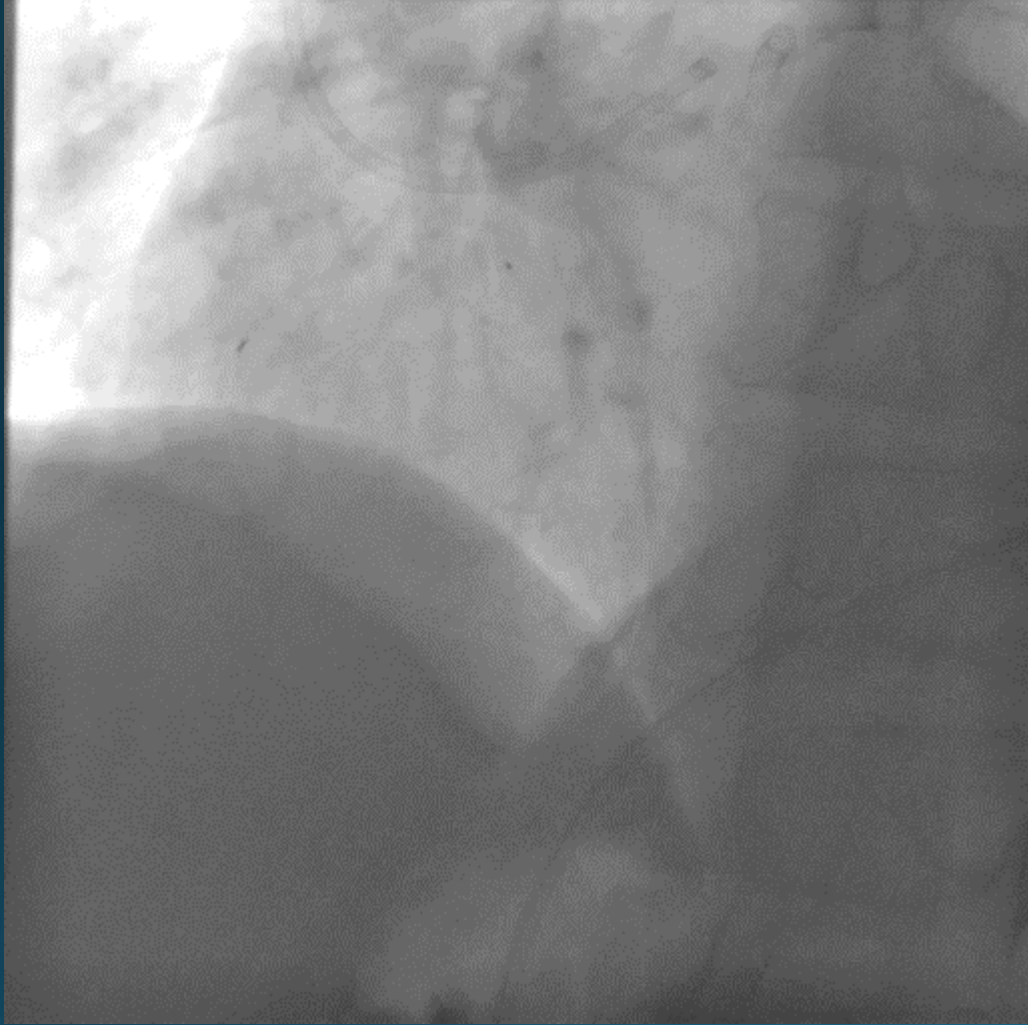


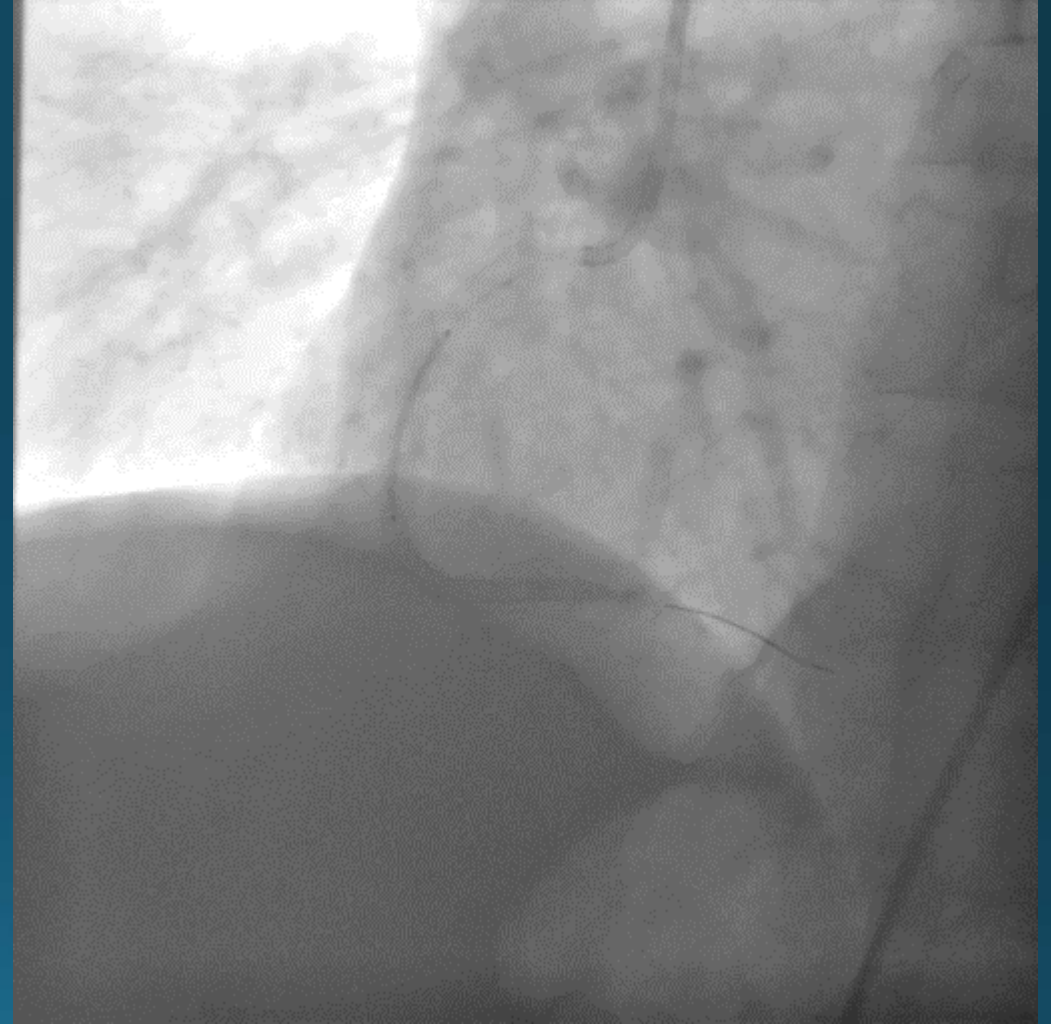
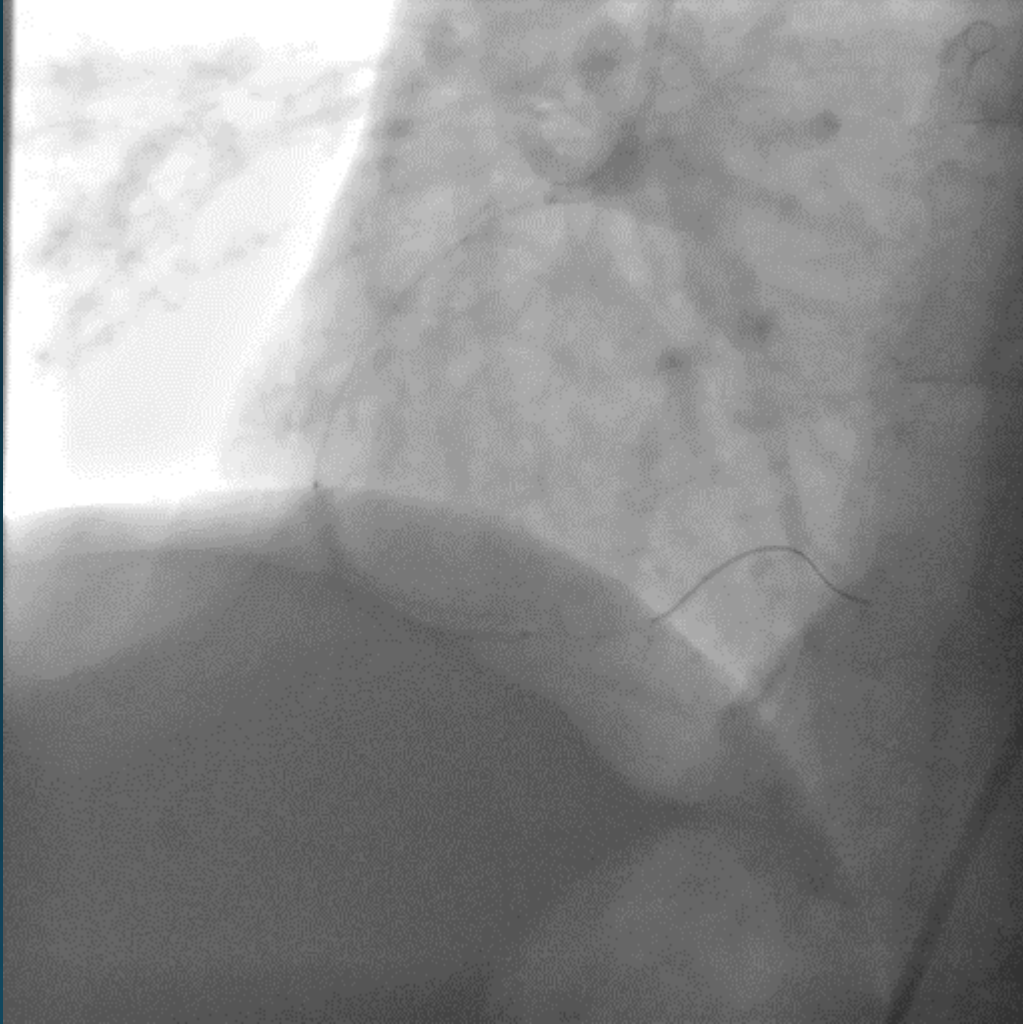




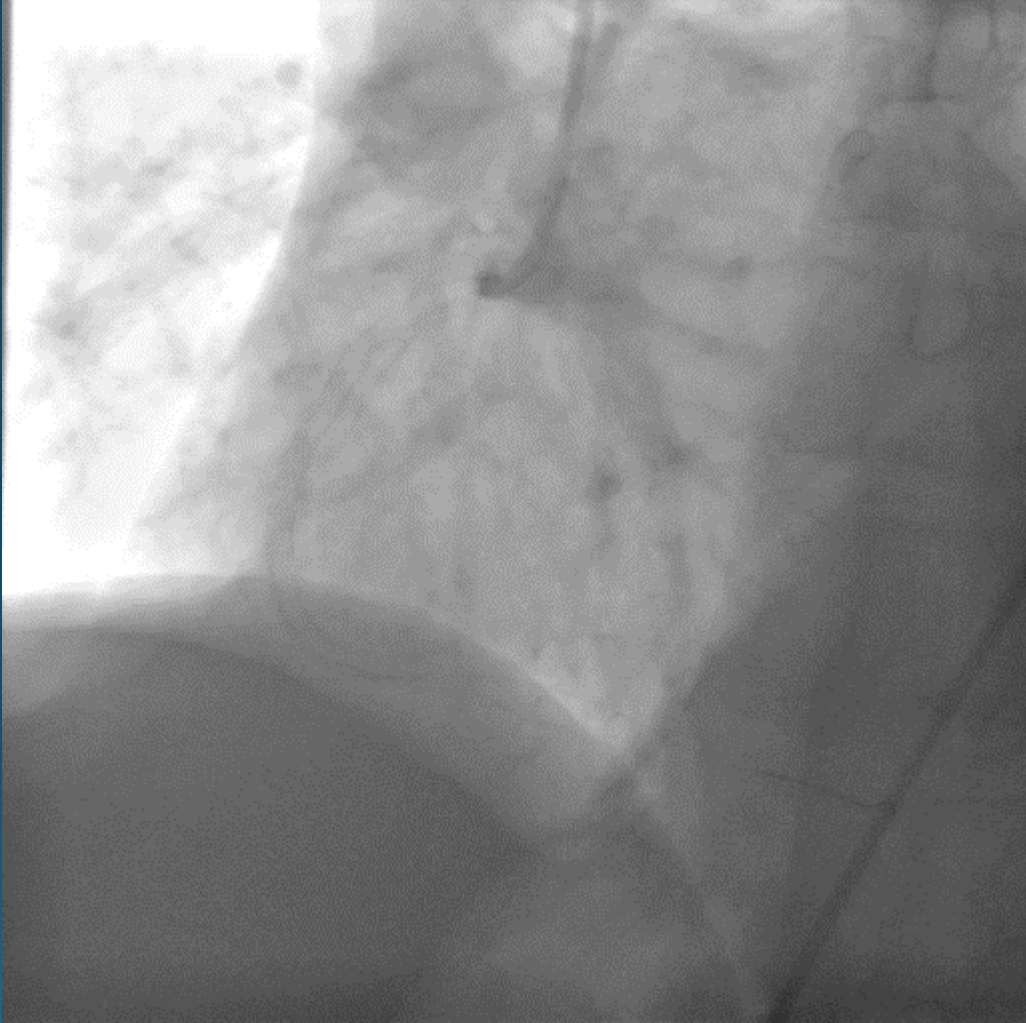








Distalden proksimale doğru 3.0x38 mm 3.0x24 mm ve 3.0x32 mm DES implante edildi.



TEŞEKKÜR EDERİM