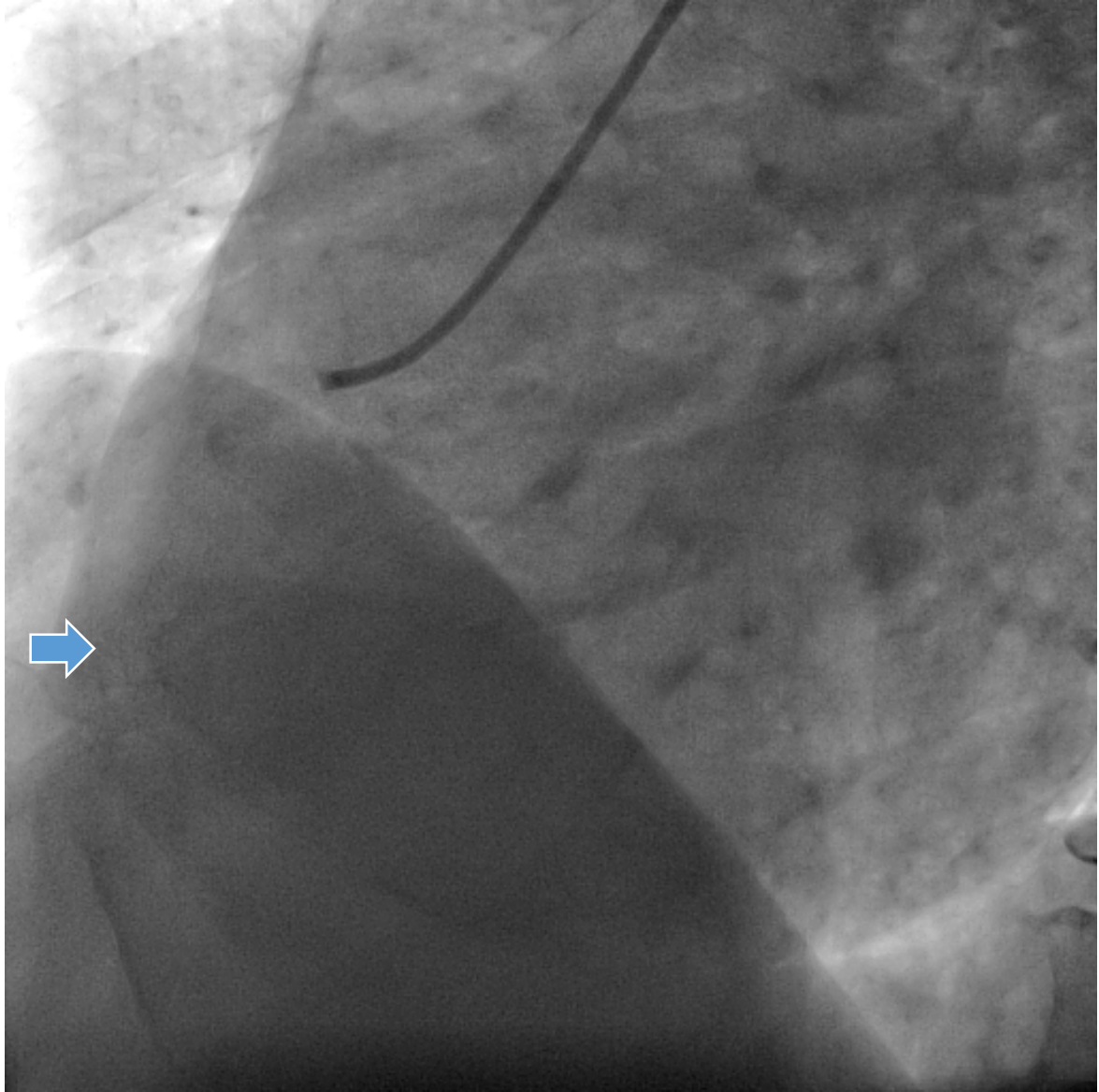


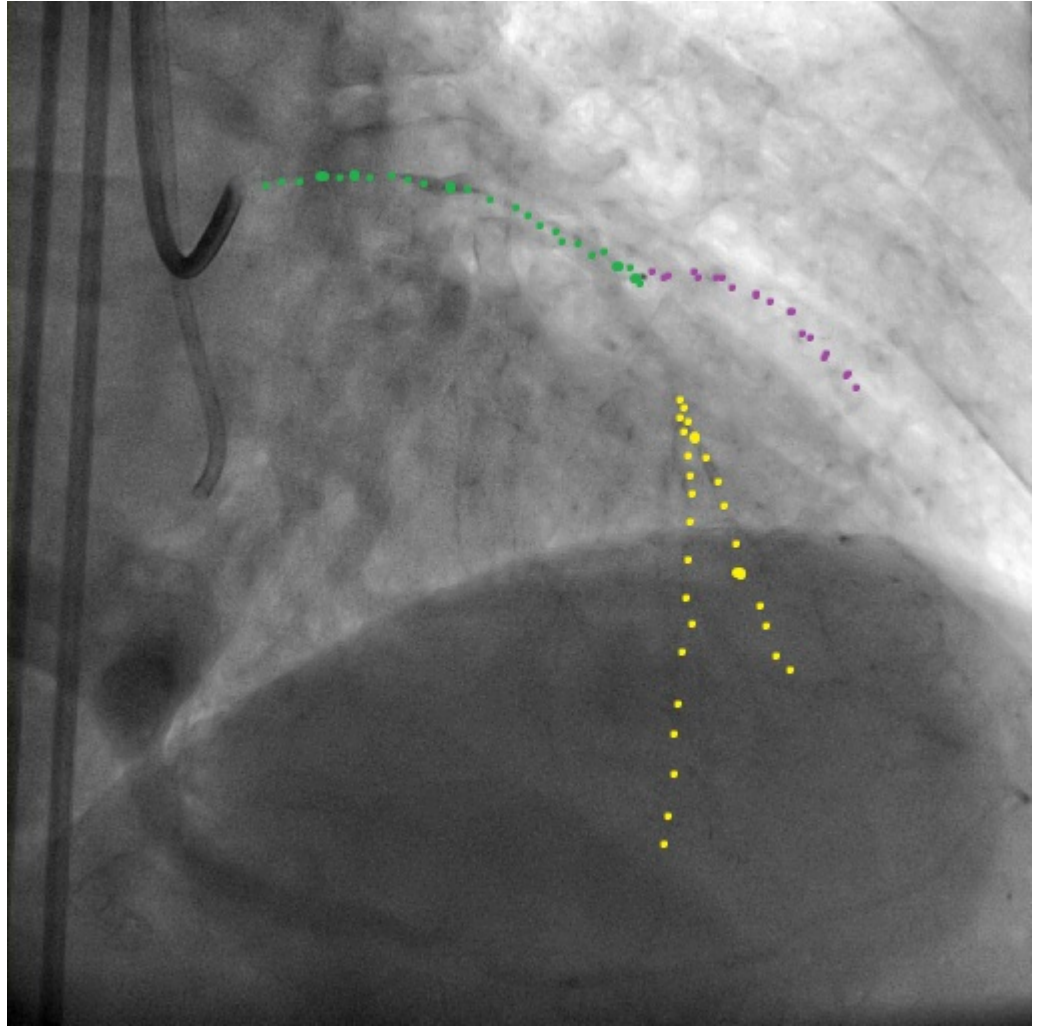
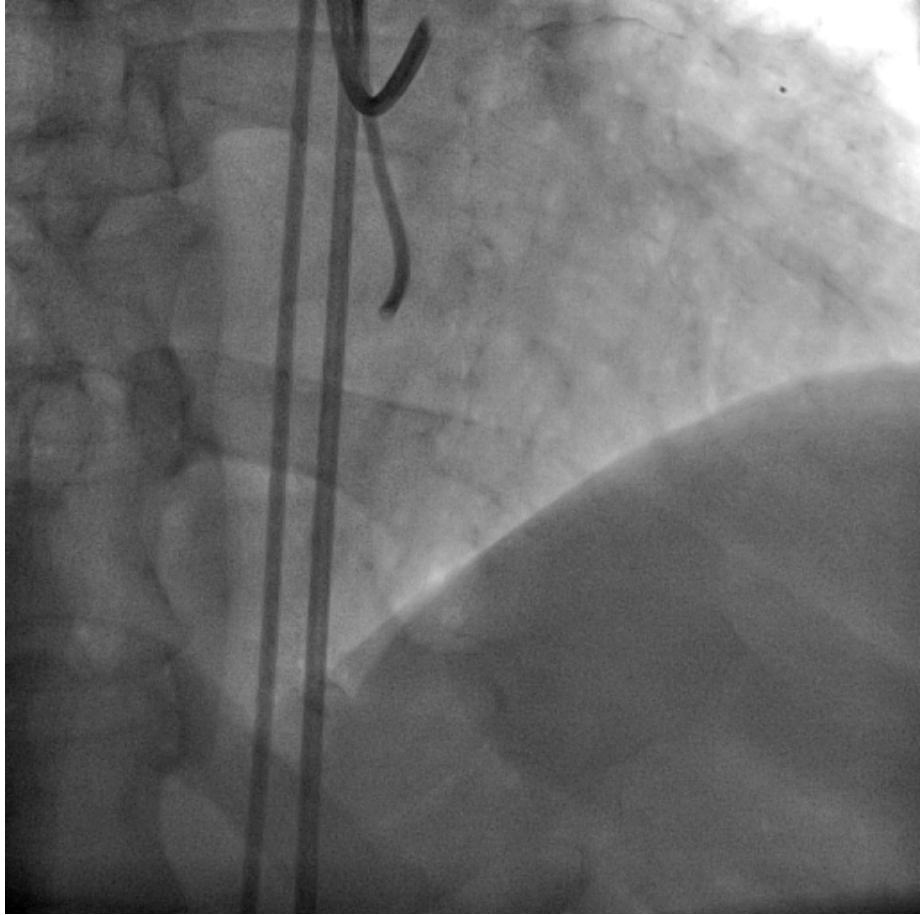
Olgu Sunumu

Marmara Üniversitesi Tıp Fakültesi Hastanesi
Kardiyoloji Anabilim Dalı
Doç. Dr. A. Altuğ Çinçin, Prof. Dr Kürşat Tigen

- 52 yaş / erkek (2014)
- Hikayesinde;
 - Uzun zamandır var olan anginal nitelikli ağrıları var...
 - 1 ay önce subakut inferior MI ile başvurmuş RCA PCI uygulanmış.
 - Son 1 aydır ağrılarının halen devam ettiğini ifade ediyor
- KAG (1 ay önce):
 - RCA ortasından %95 tromboze darlık
 - LAD ortasından %100 total
 - Cx plaklı, anlamlı darlık yok.
- Özgeçmiş; özellik yok
- Soygeçmiş; özellik yok
- Alışkanlık; 50 py sigara

- FM: belirgin patolojik bulgu yok...
- Elektrokardiyografi;
 - İ inferior Q dalgaları
 - V4-V6 arası T negatifliği
- Laboratuvar
 - Kreatinin 1.1
- Ekokardiyografisinde
 - EF %45-50
 - İ inferior ve inferolateral duvarlarda segmenter DHK.





J-CTO Registry_

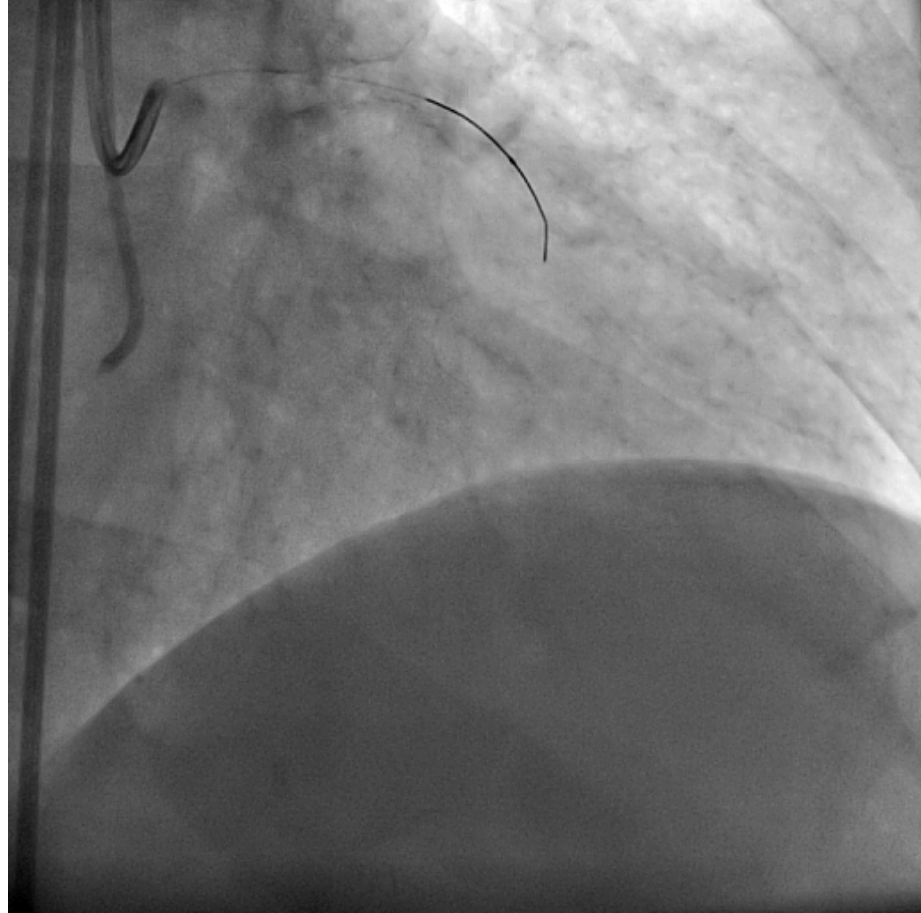
- CTO proximal segment sonlanımı: **künt** / tapered
- Tıkalı segmentte kalsifikasyon : var / yok
- Tıkalı segmentte $>45^\circ$ açılanma: var / yok
- Tıkalı segment uzunluğu **$>20\text{mm}$** / $<20\text{mm}$
- Daha önceden başarısız girişim: var / yok

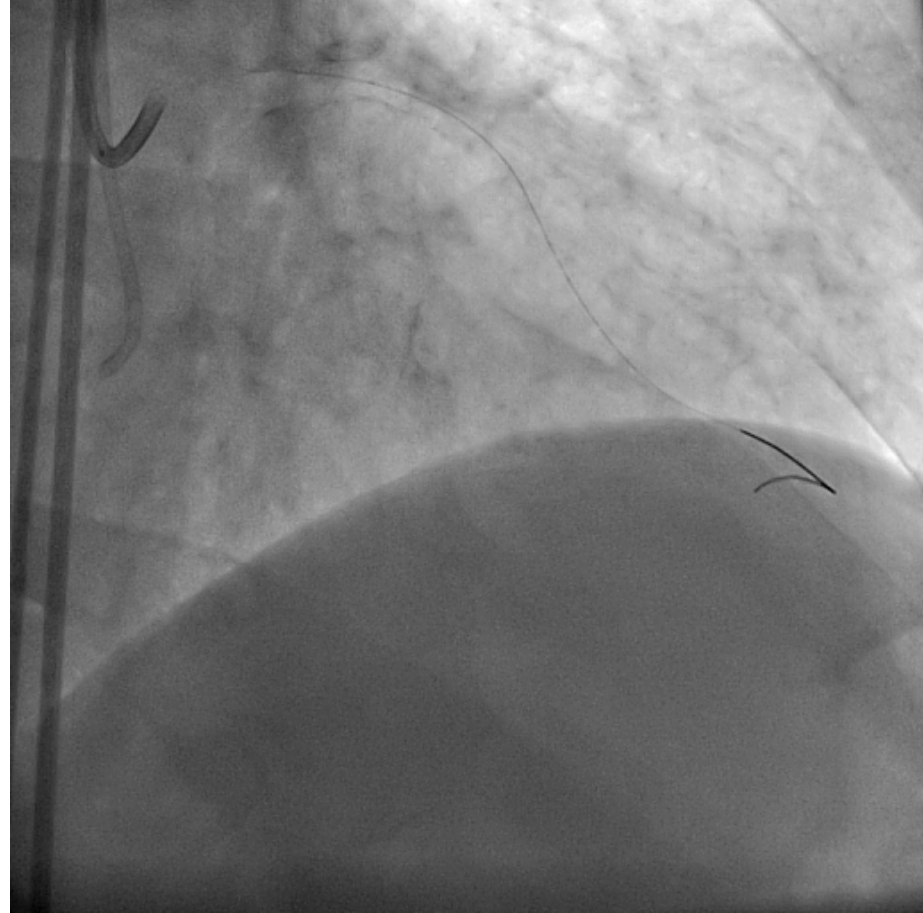
0: kolay

1: orta

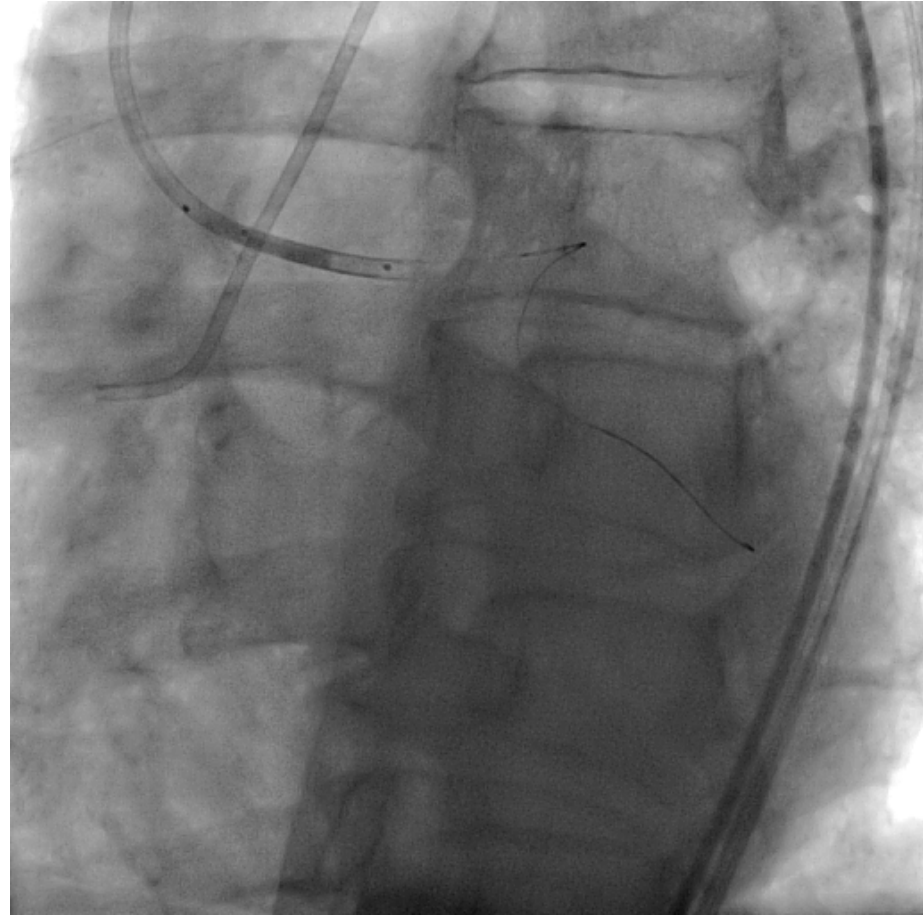
2: orta

≥ 3 : çok zor

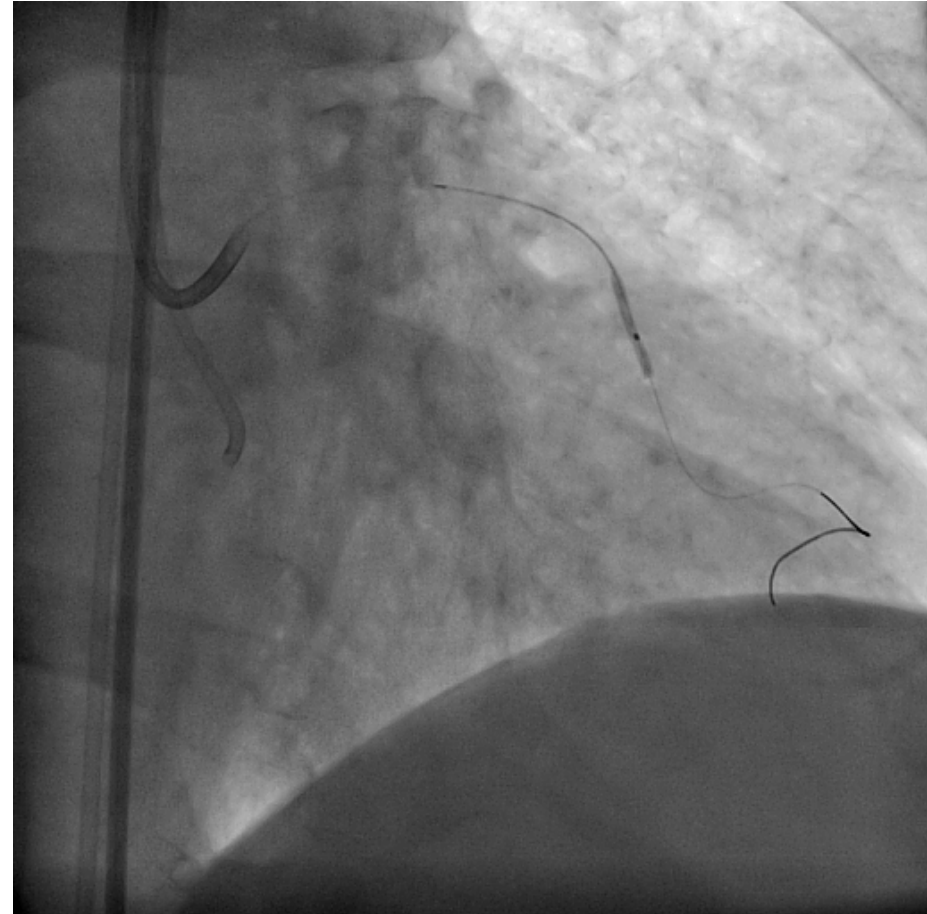


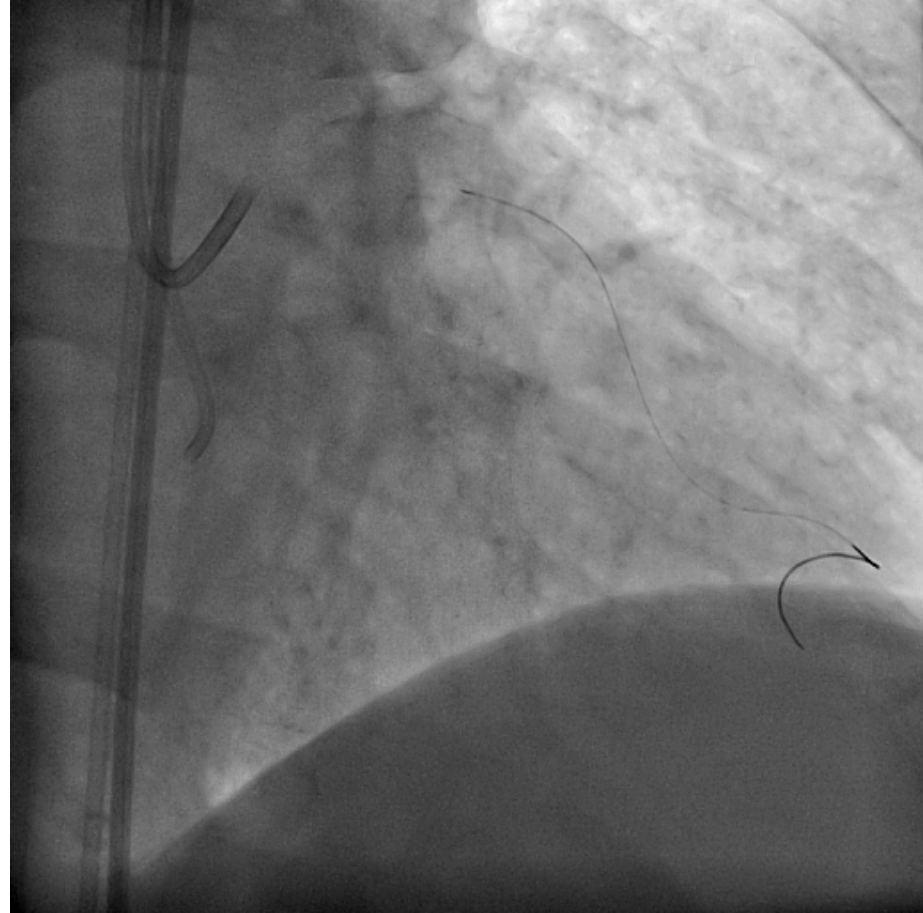




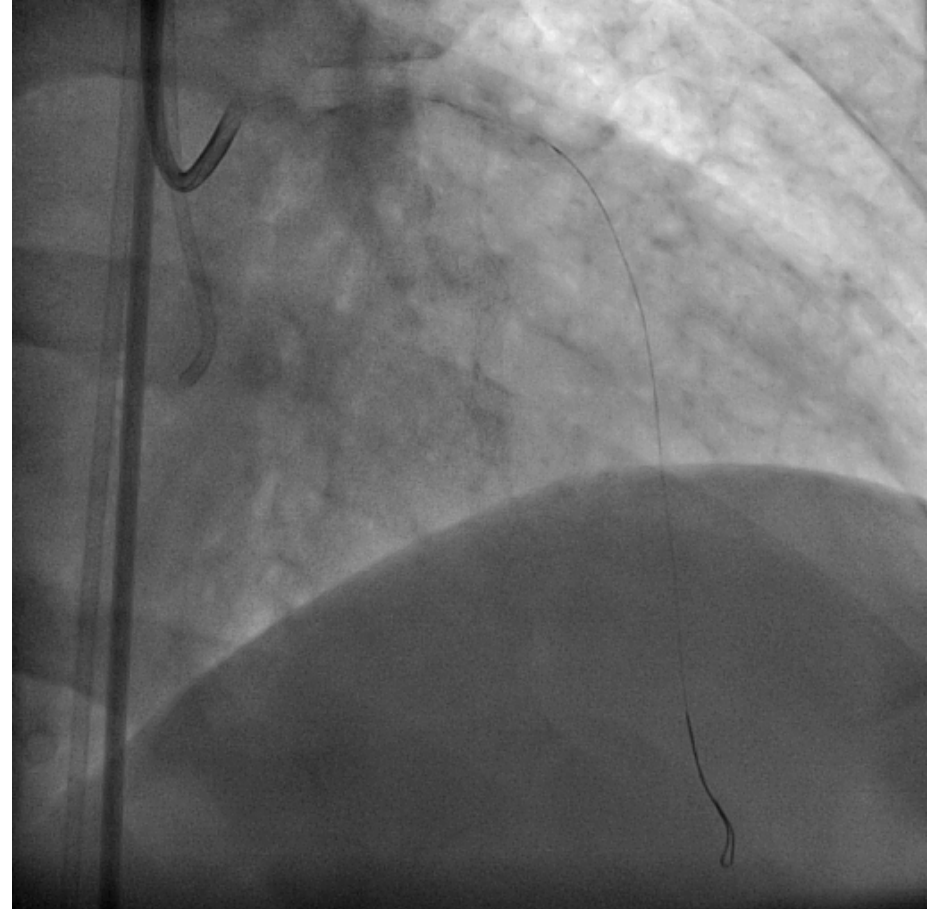


- Tel distali Diagonalde
- Simpass 1.5x20mm

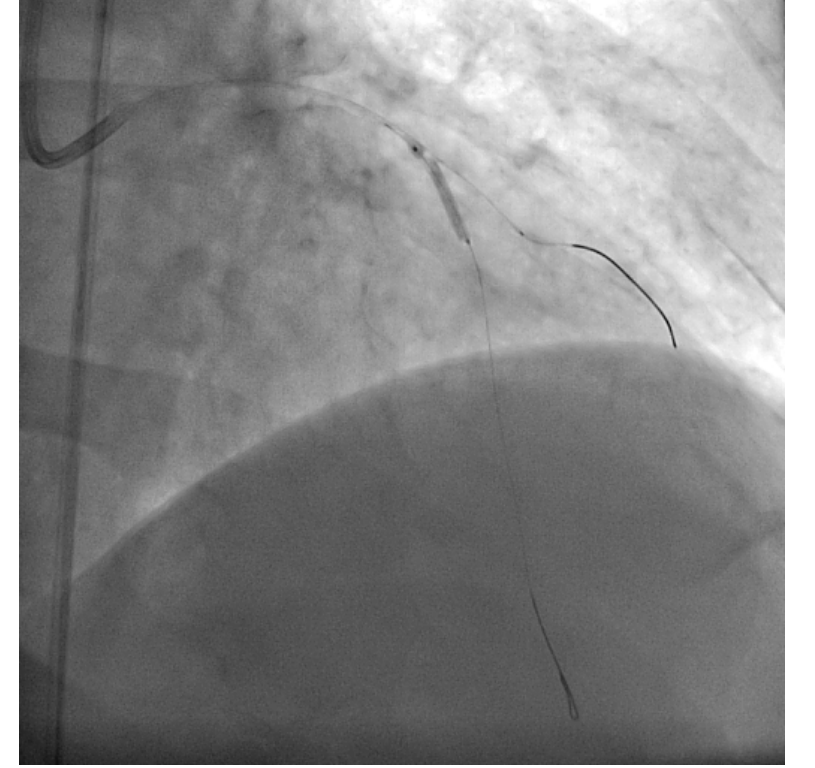
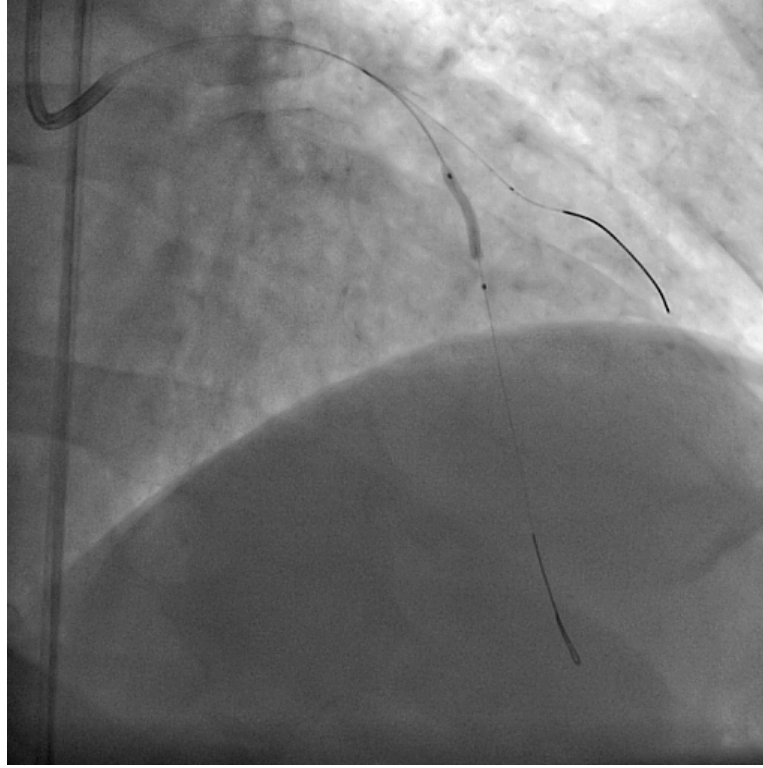


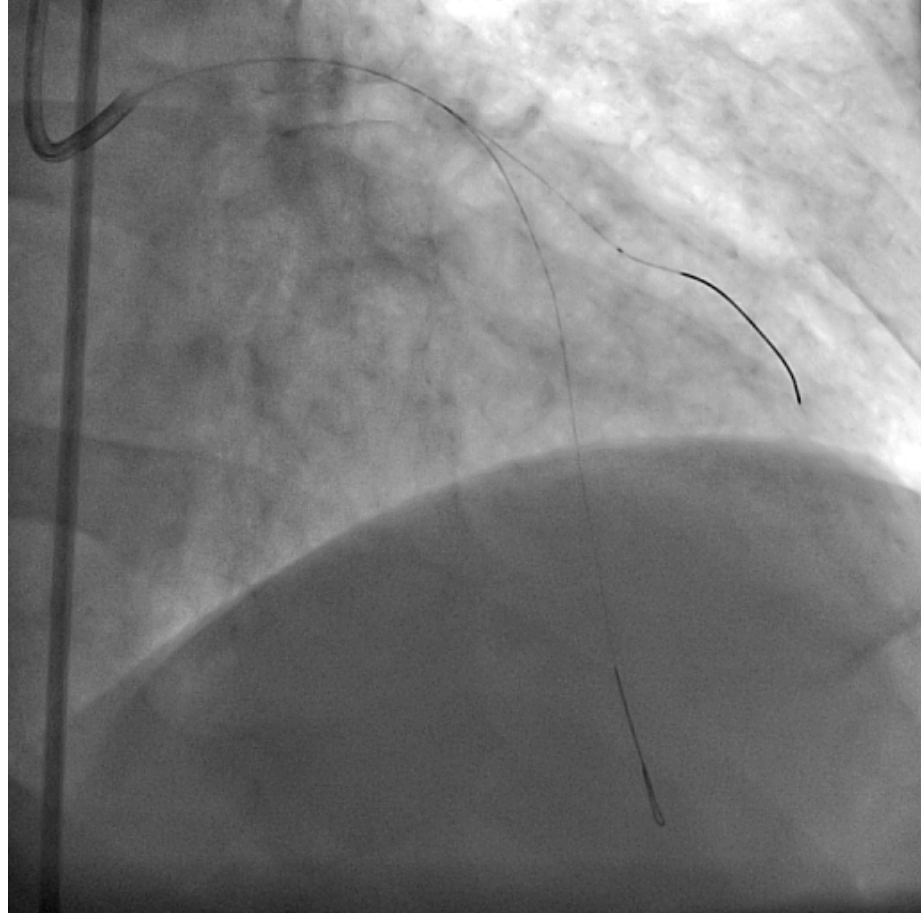


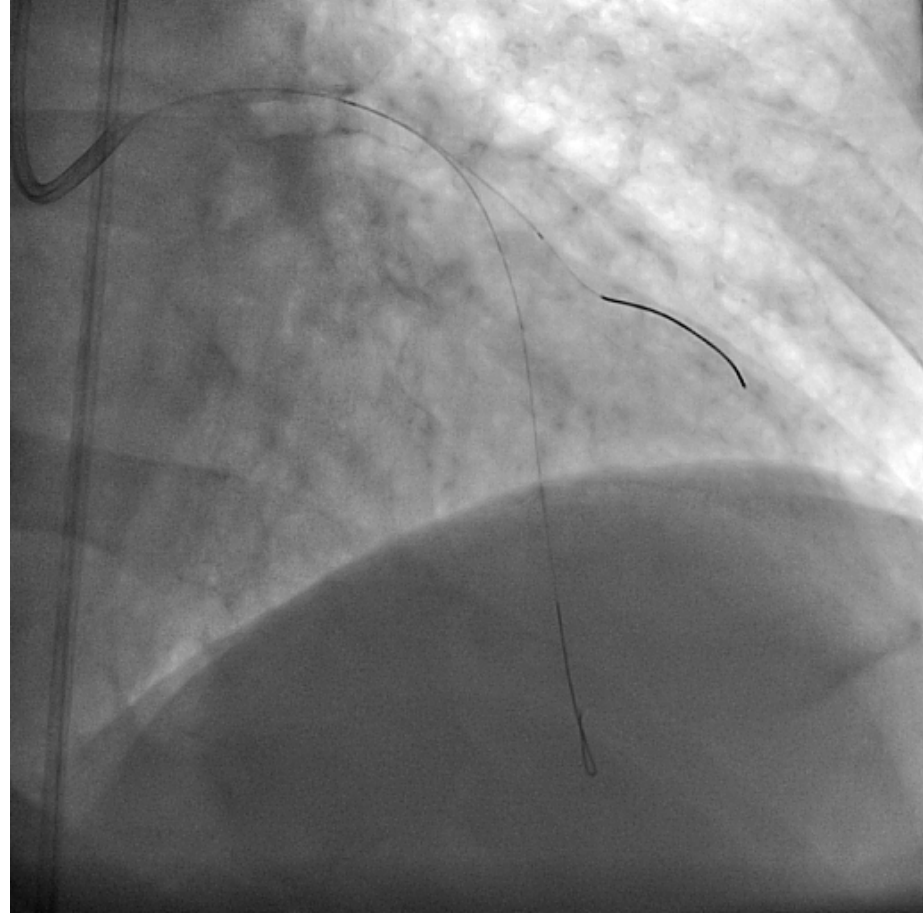
- LAD – diagonal bifurkasyon bölgesinden itibaren balon dilatasyon sonrasında telin ana dala uzatılması.



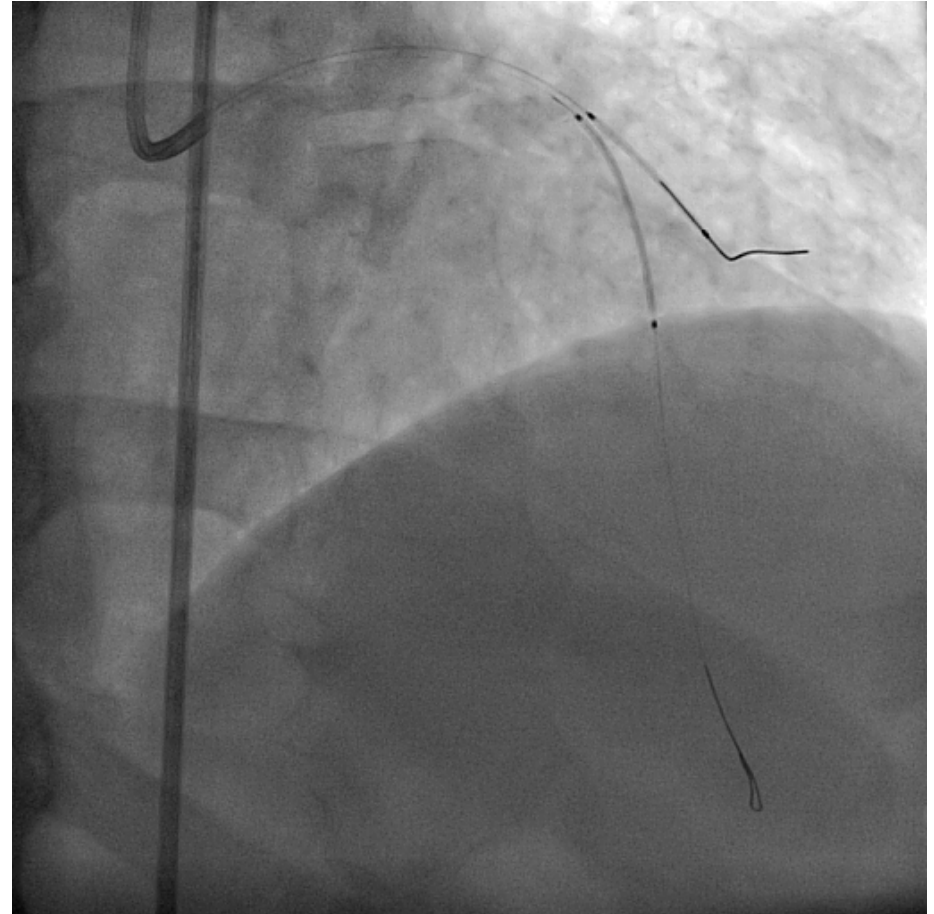
- Simpass
2.0x20mm balon
- D2 hizasından D1
bifürkasyonuna
kadar
predilatasyon

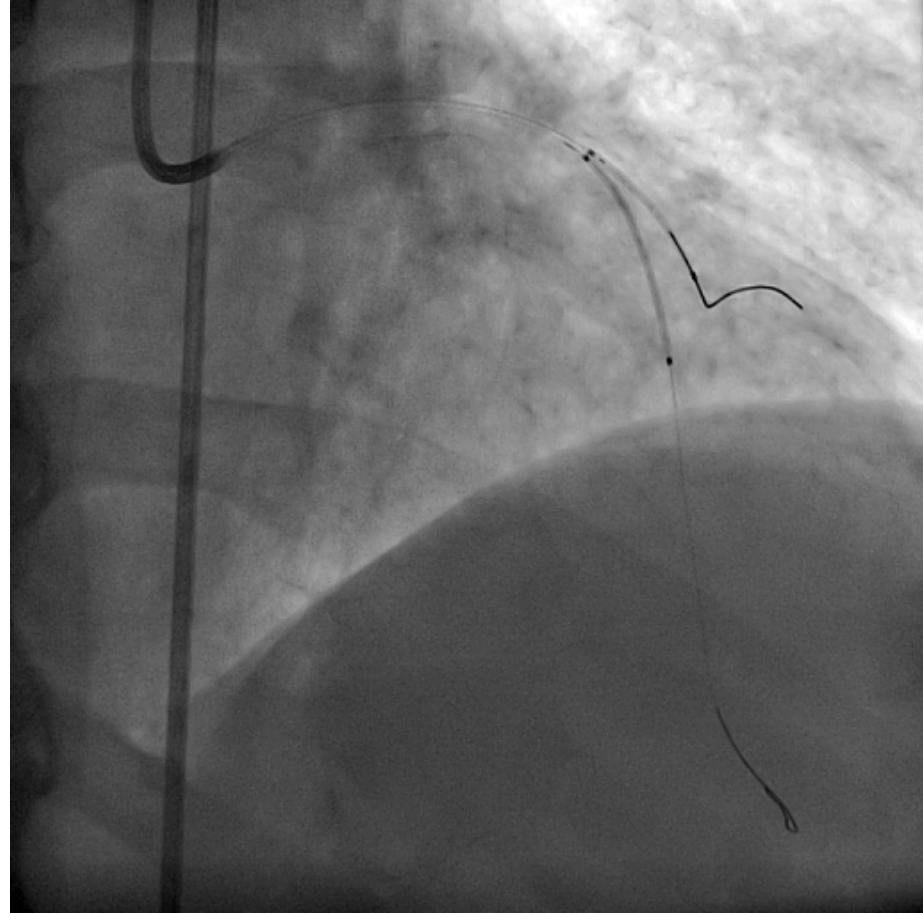


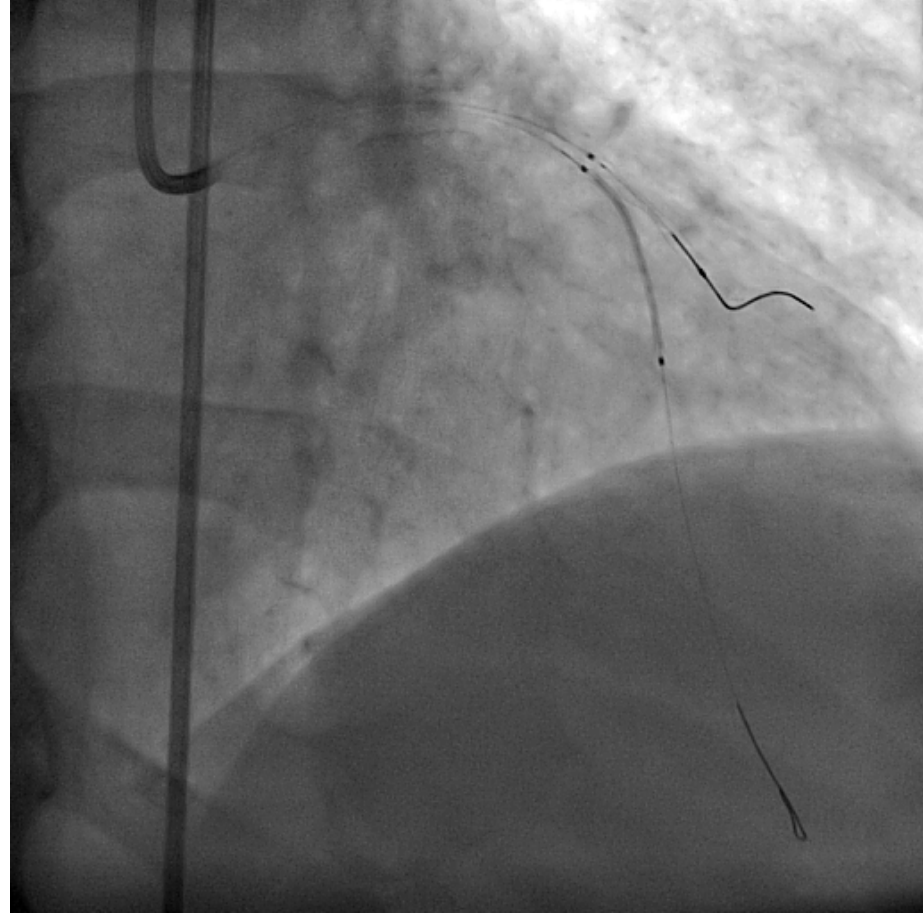


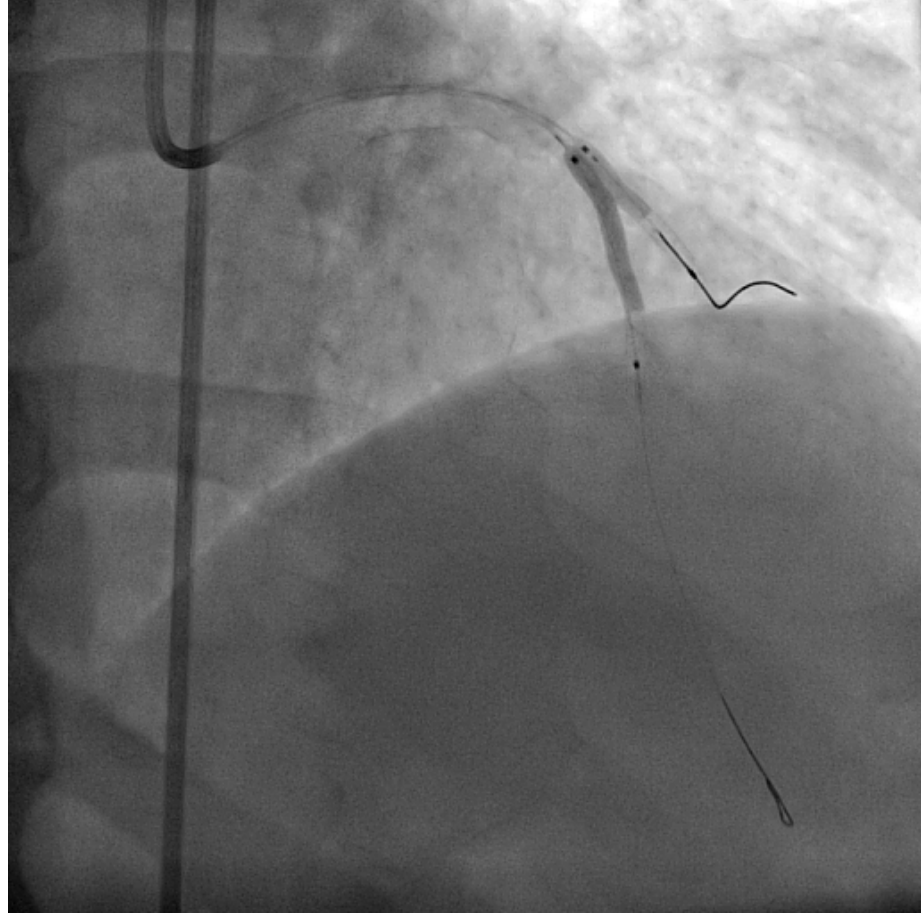


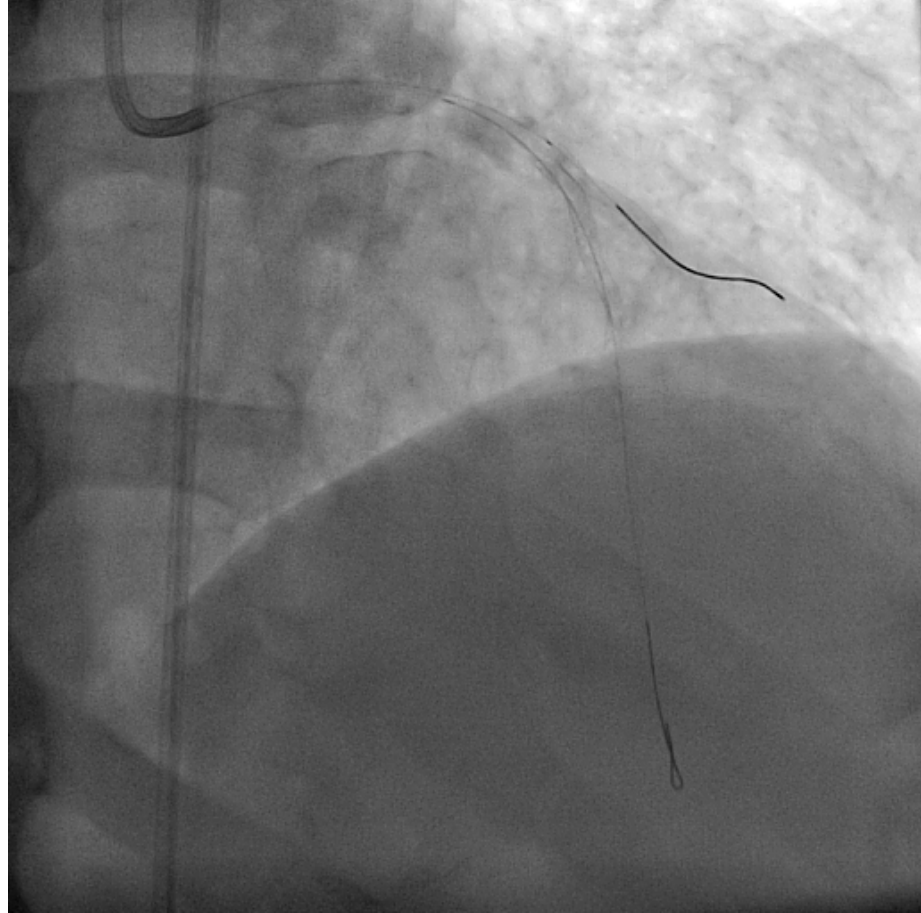
- LAD:
 - 2.75x30mm Endouver stent
- D1:
 - 2.25x24mm Endouver stent

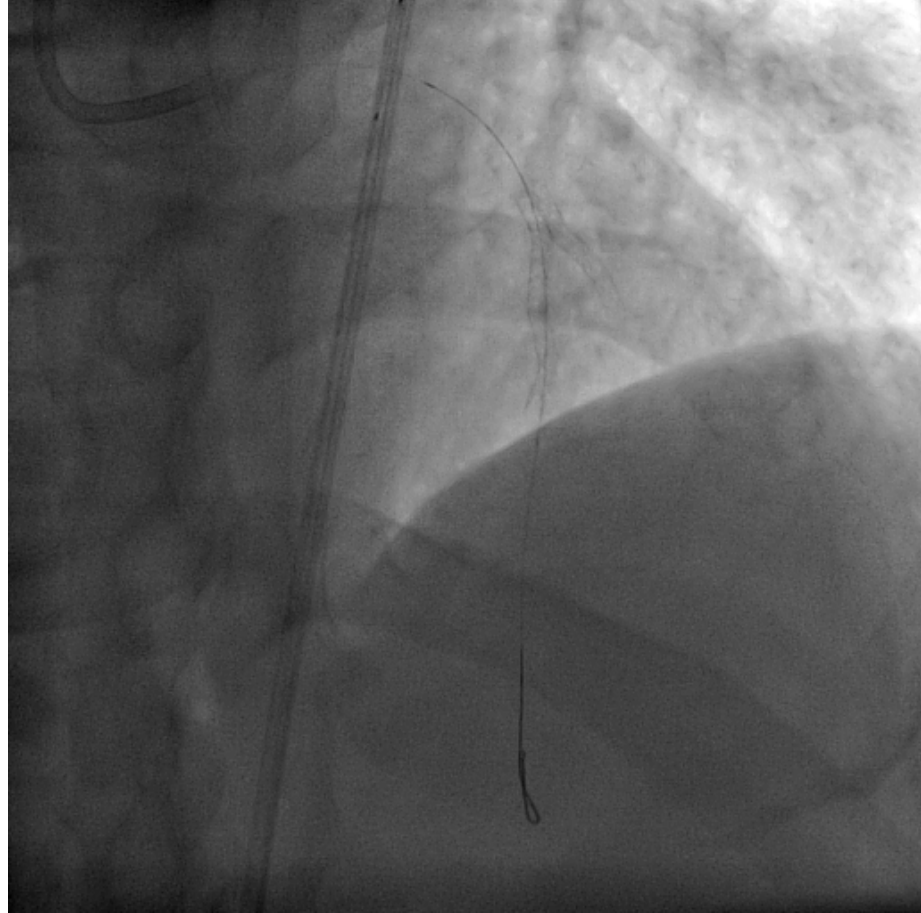


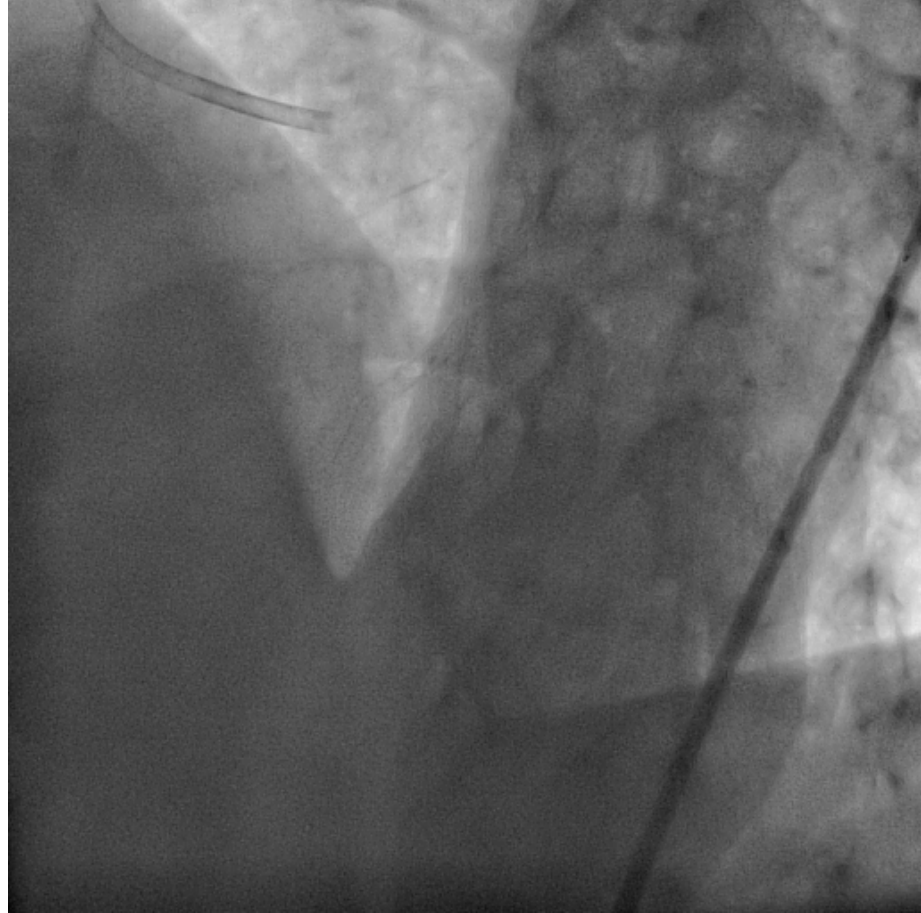






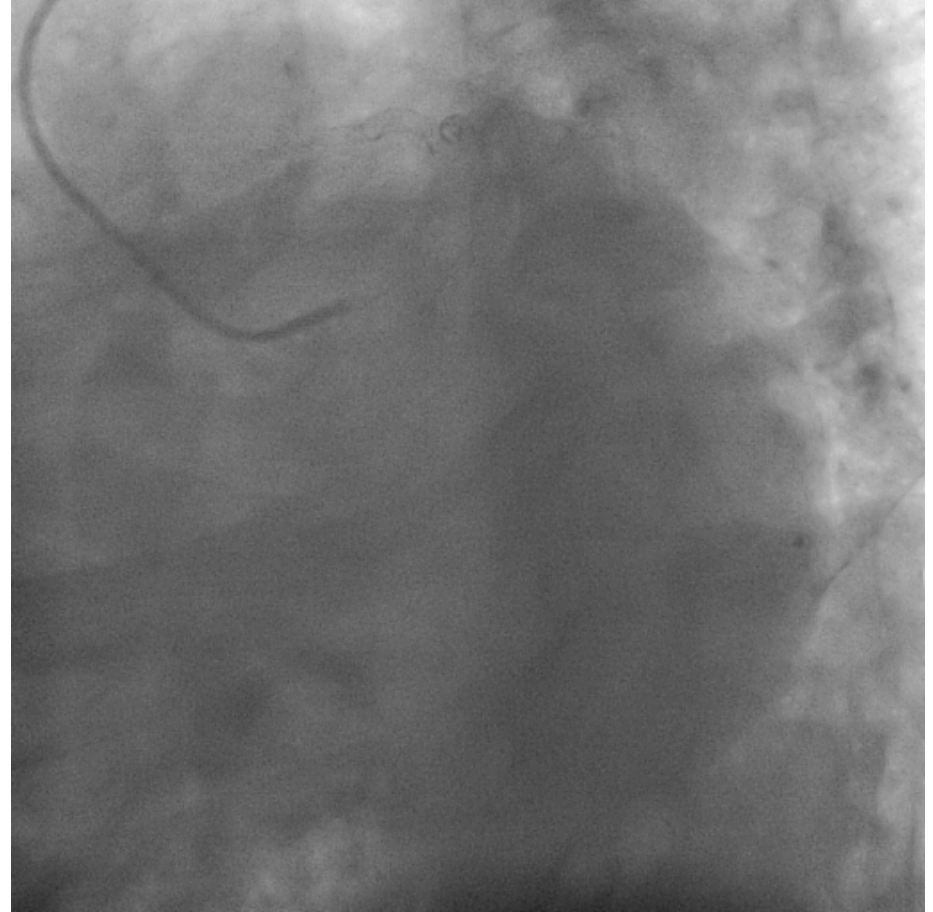
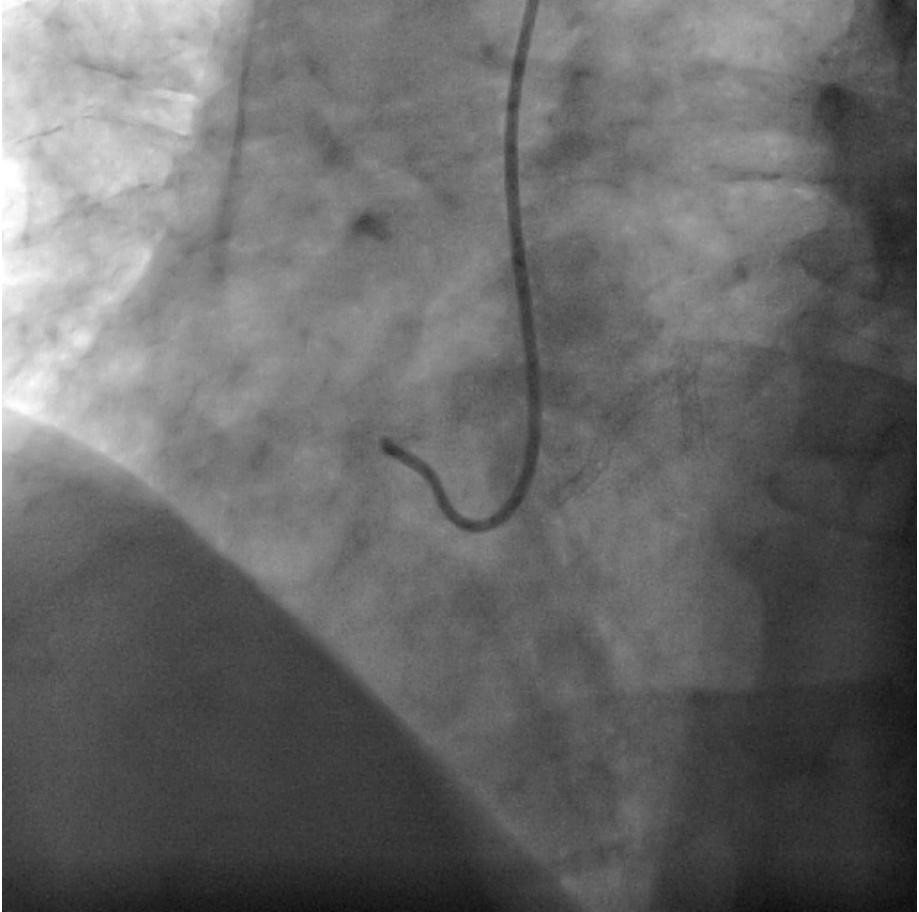


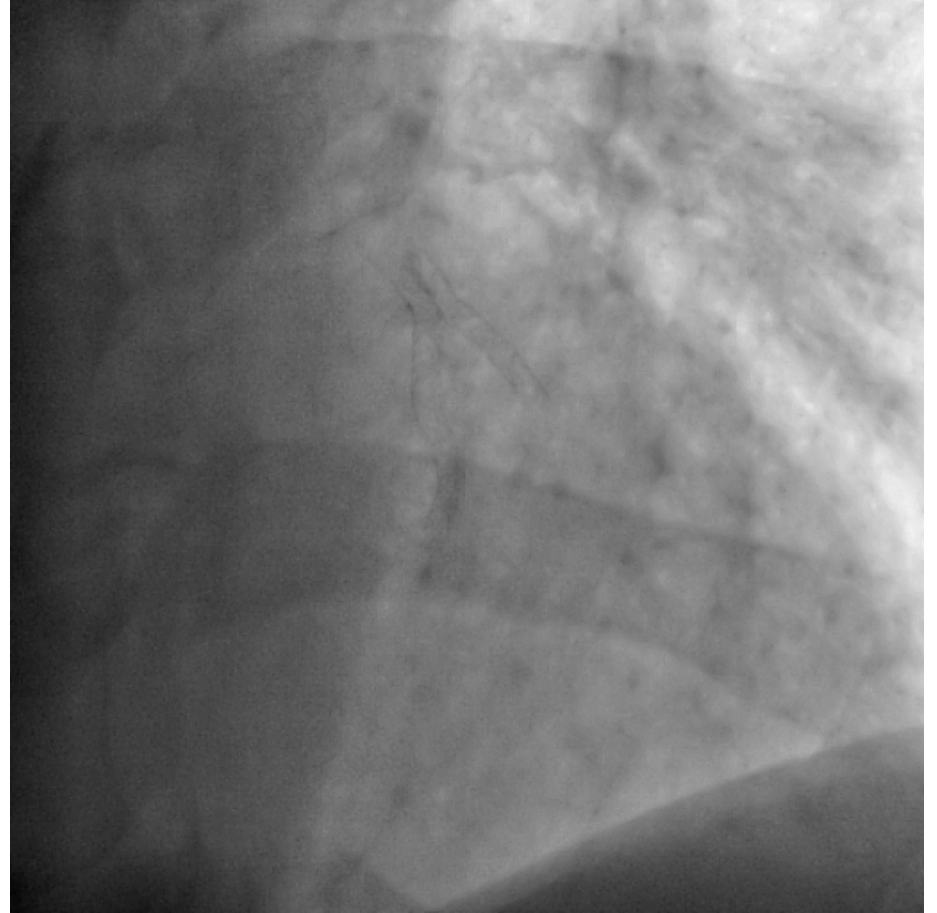
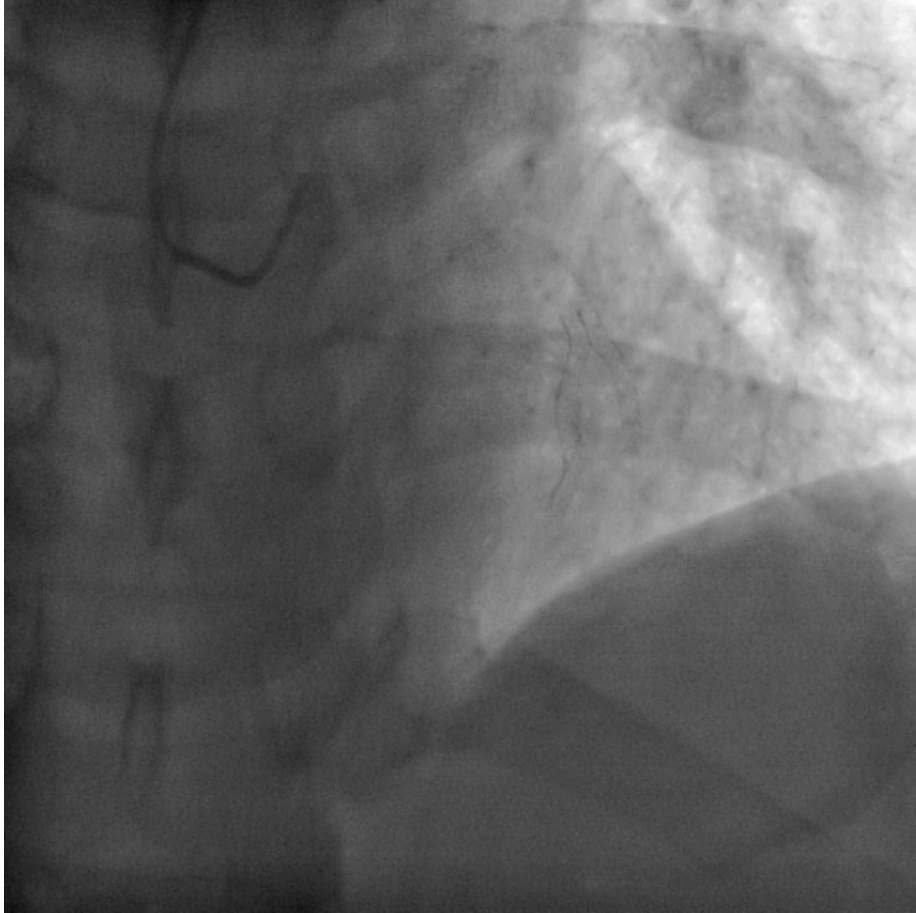


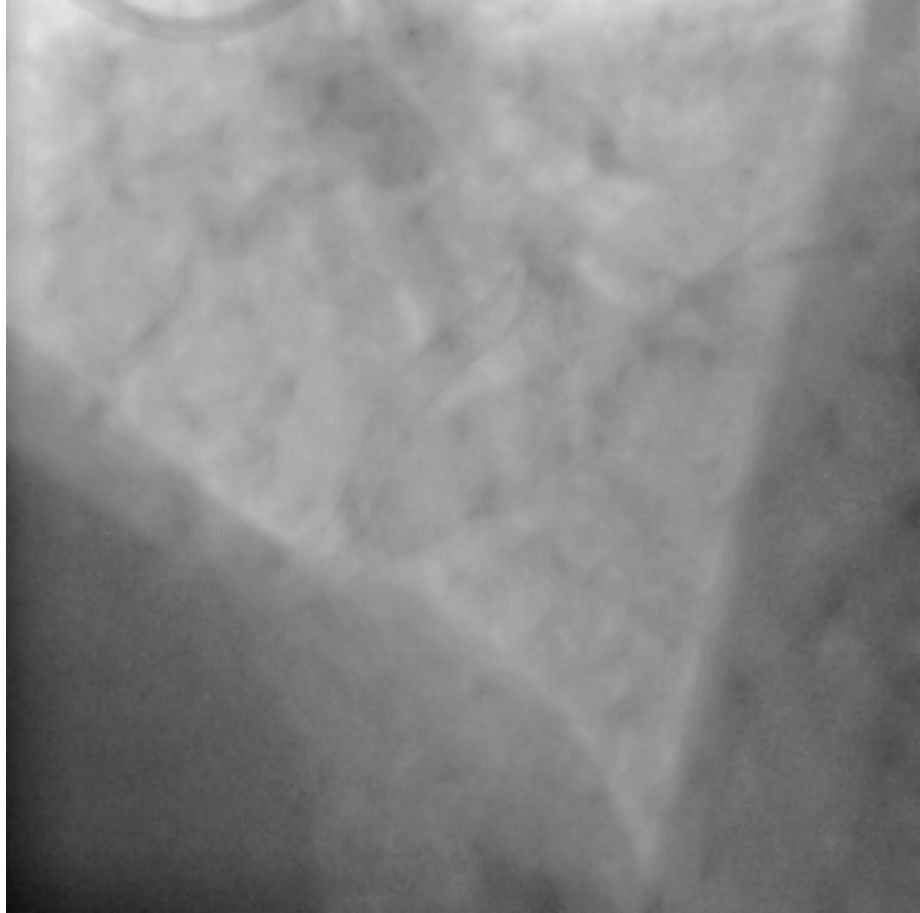


- KTO-PKG sırasında uygulanacak en iyi bifürkasyon lezyonu tedavisi hakkında veri yok...
- Simultane kissing stent ;
 - İşlem sırasında komplikasyon oranı; ?
 - Karinanın yerinin ayarlanması; ?
 - Açık kalma oranları; ?
- En iyi teknik halen provisional yaklaşım...

İşlem sonrası 2. yıl kontrol KAG







- Teşekkürler

