

Olgu Sunumu

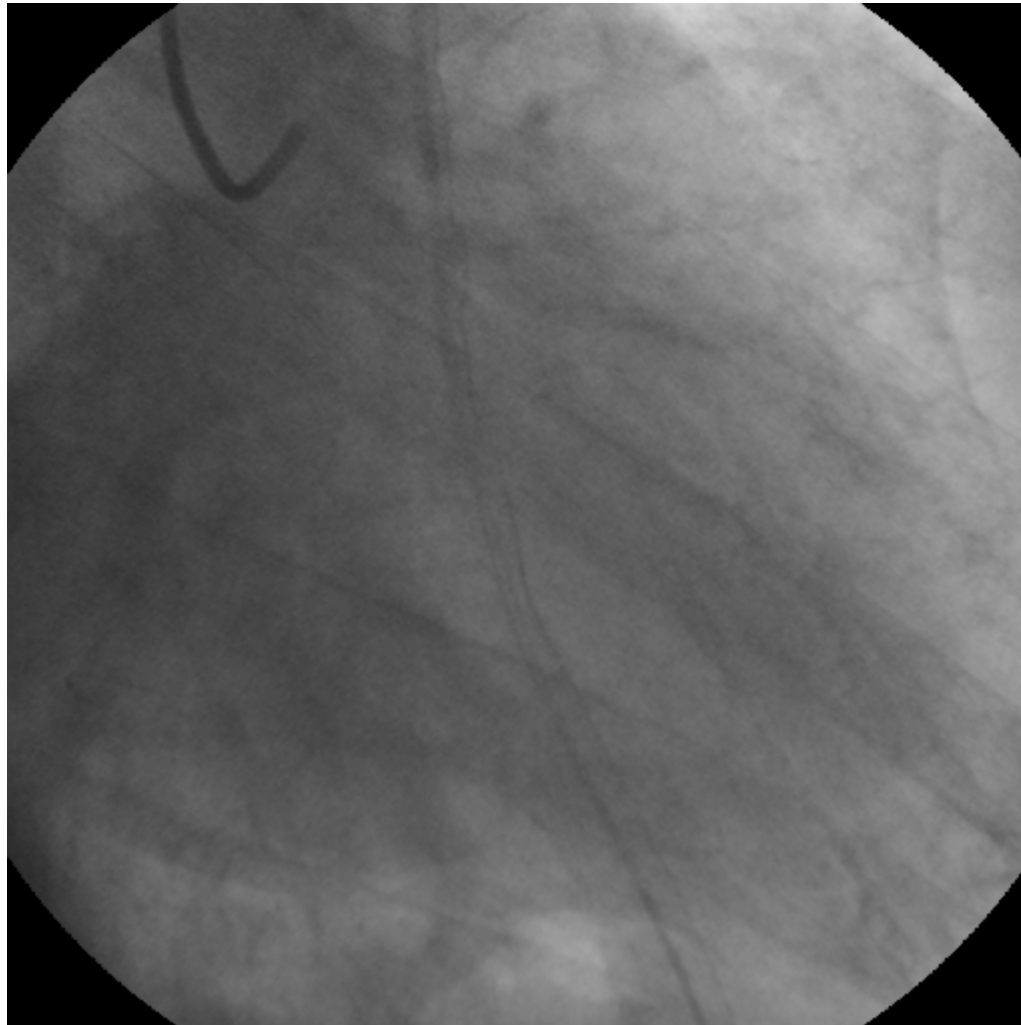
Doç. Dr. Murat ÇAYLI

Adana Numune Eğitim ve Araştırma Hastanesi

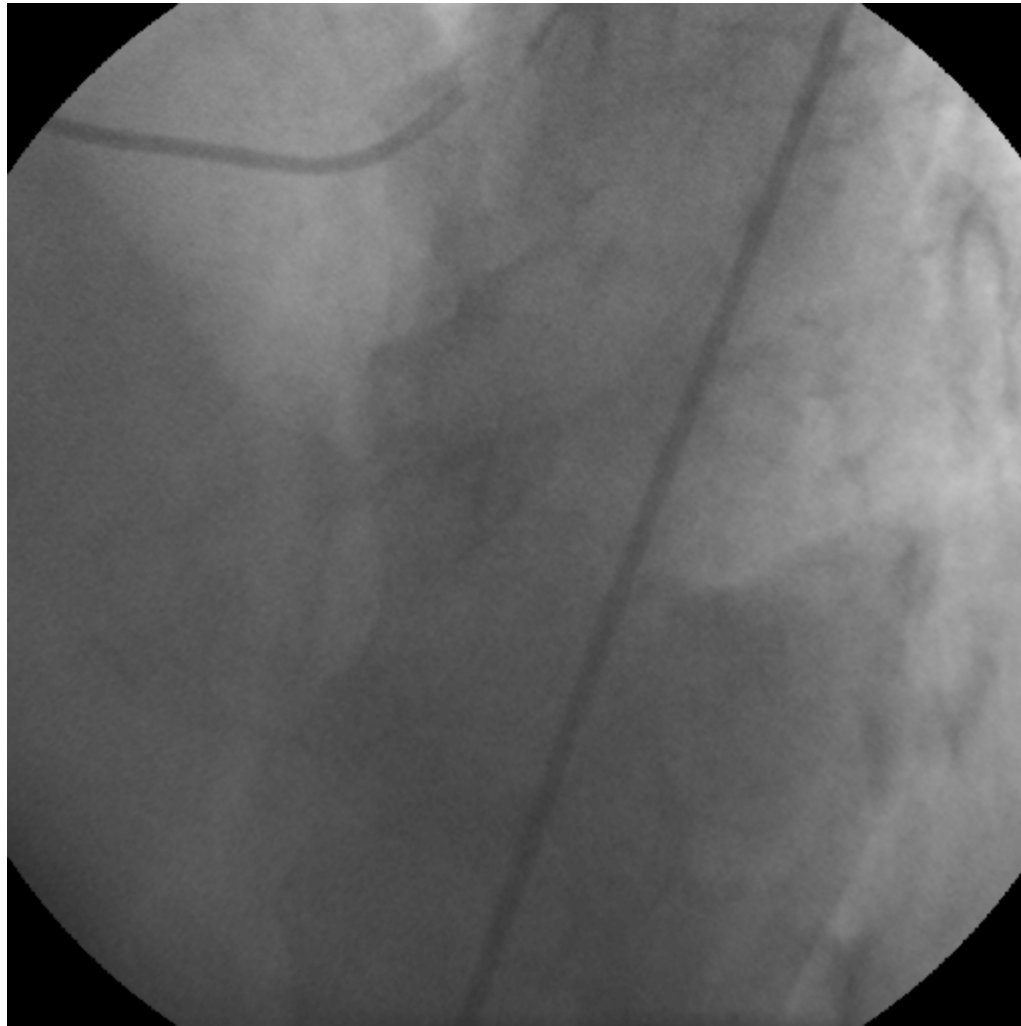
Kardiyoloji Eğitim ve İdari Sorumlusu

- 72 yaş, K
- HT (20 yıldır)
- 8 aydır tipik stabil angina pectoris
- EKG: Ritm sinüs, anterior derivasyonlarında non-spesifik ST-T değişikliği
- Eko: Apeks ve anteroseptal duvar hipokinetik
EF: %42

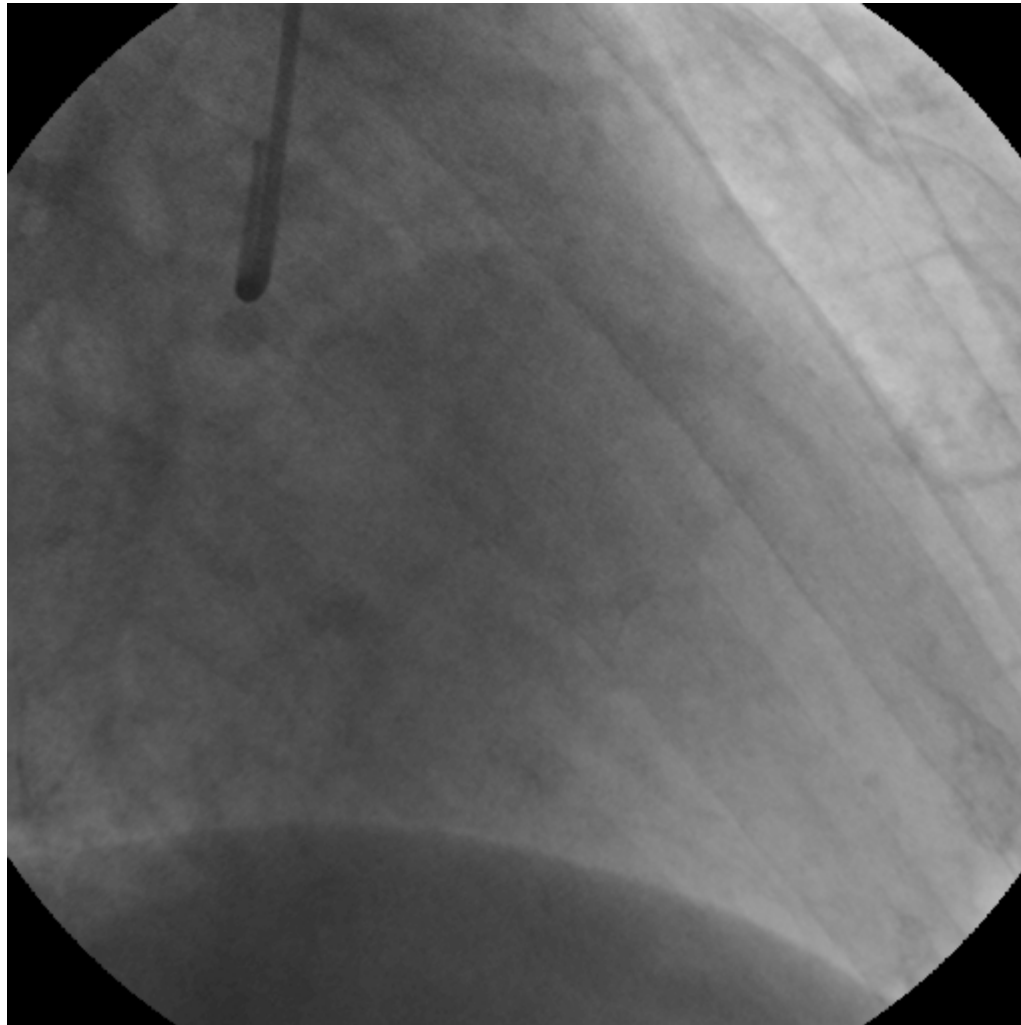
Tanısal anjiyografi- sol sistem



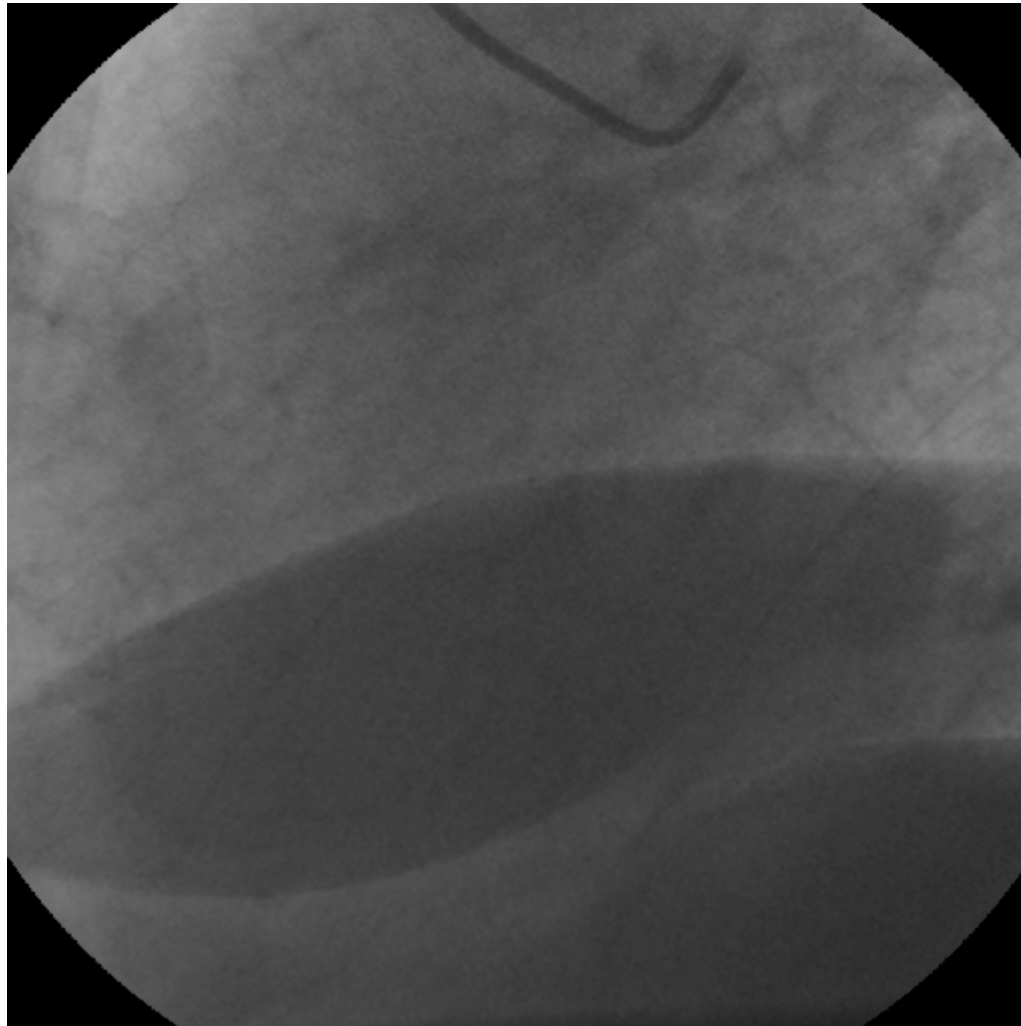
Tanışal anjiyografi- sol sistem



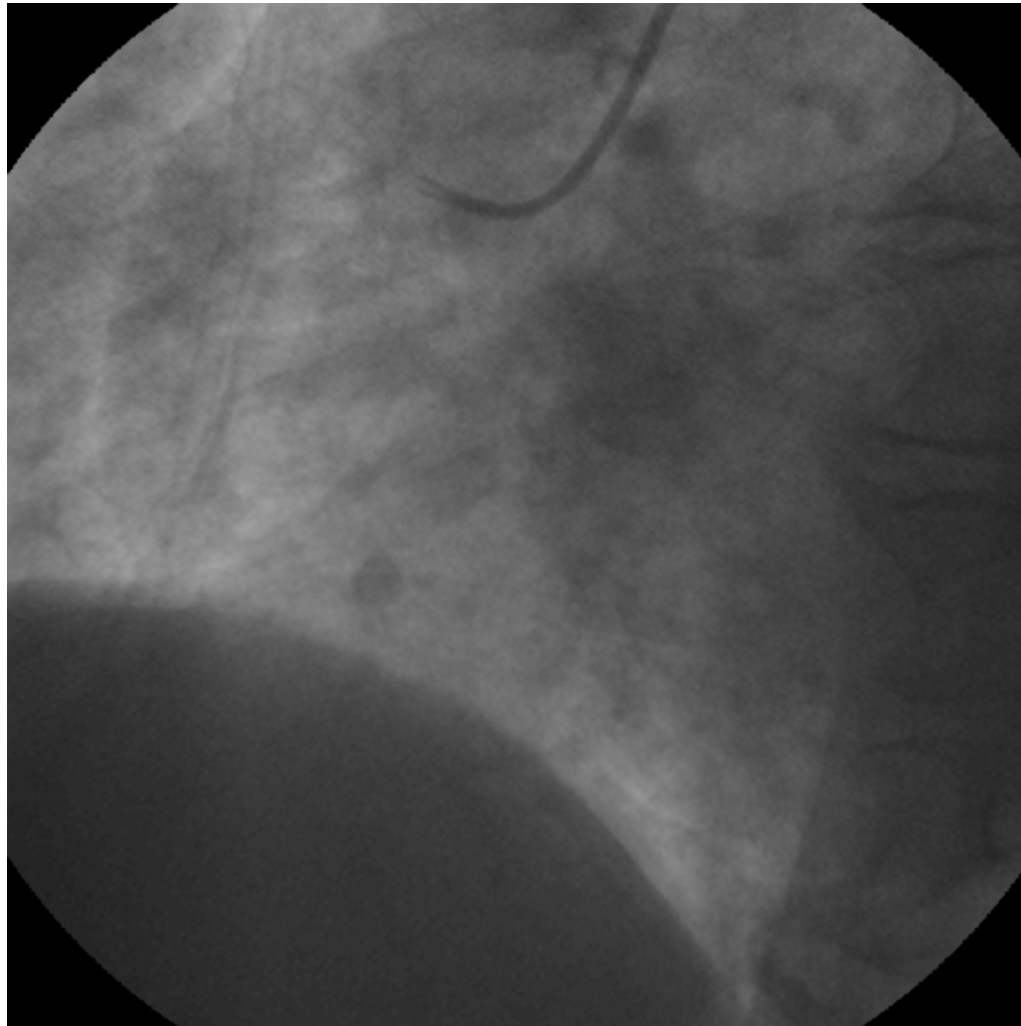
Tanışal anjiyografi- sol sistem



Tanışal anjiyografi- sol sistem

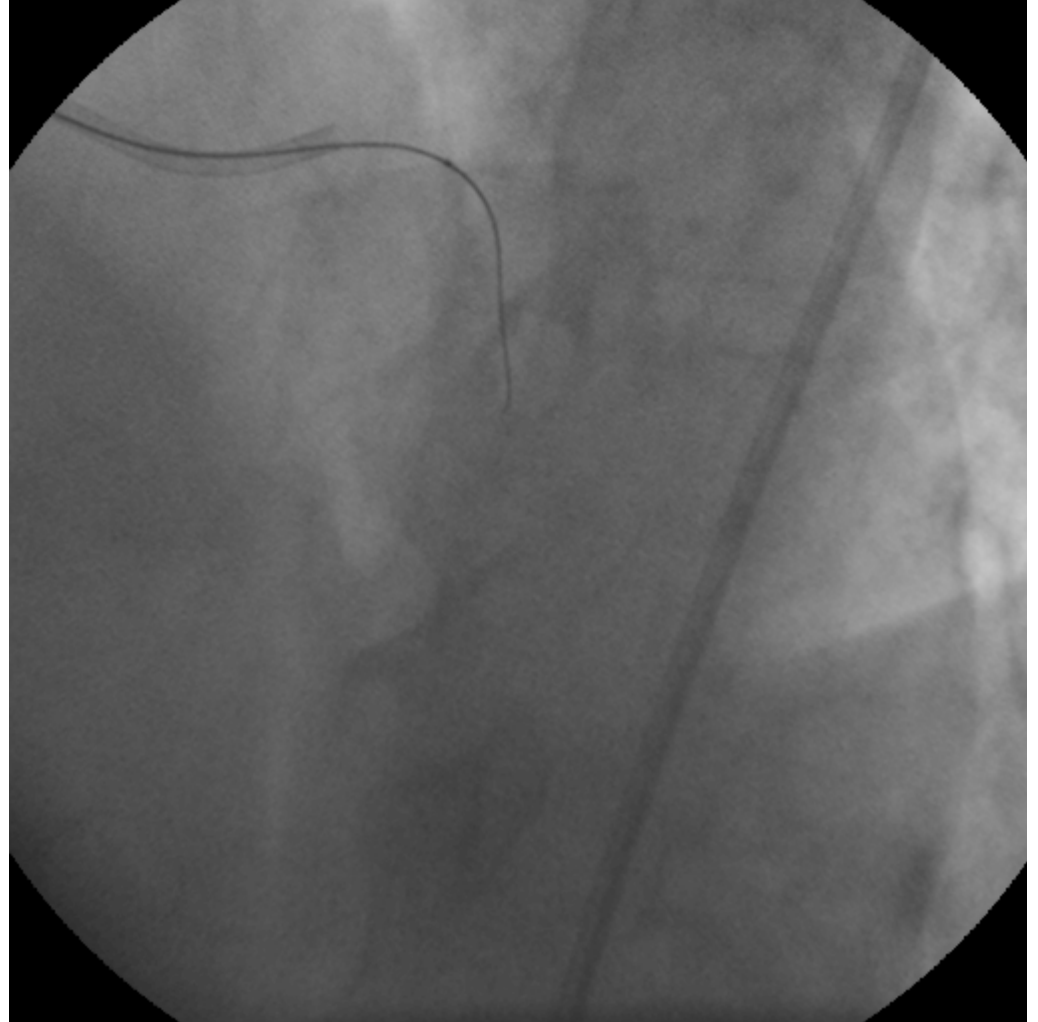


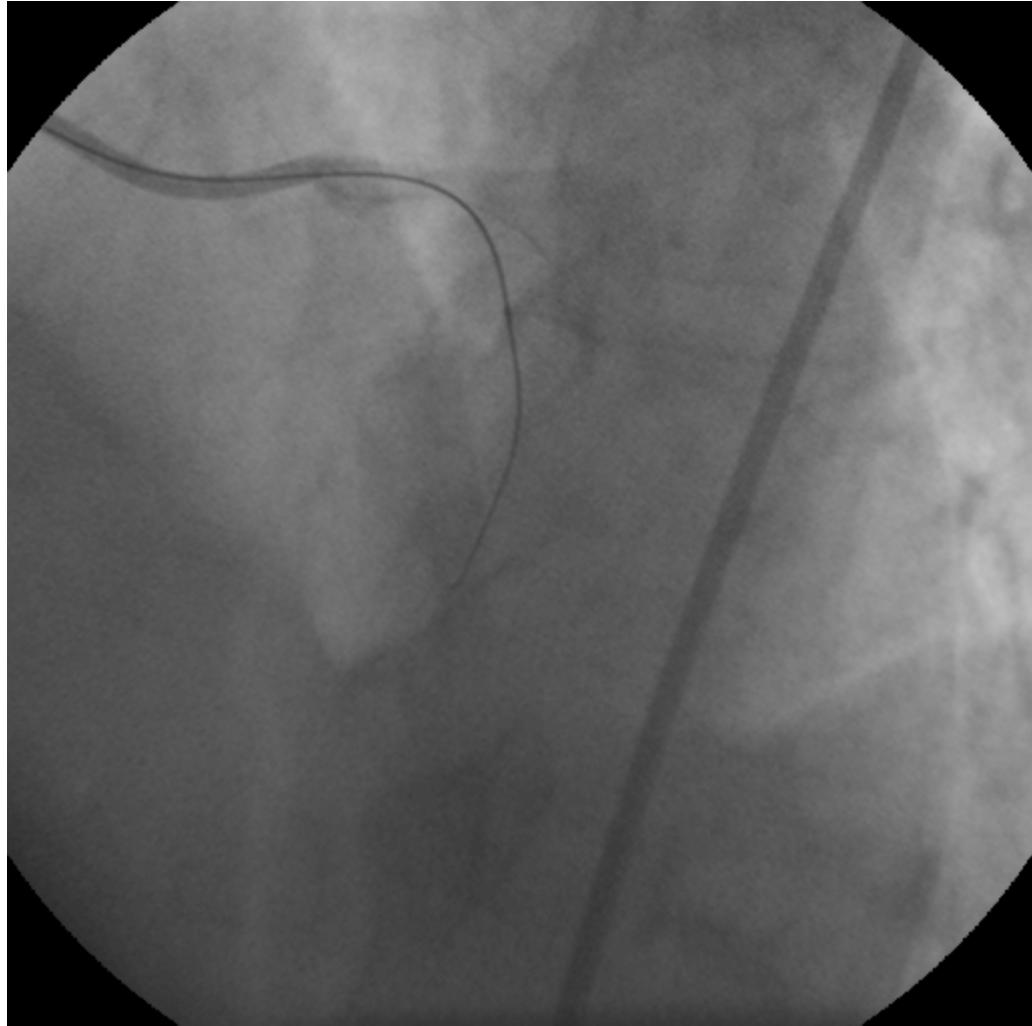
Tanısal anjiyografi- sağ koroner arter

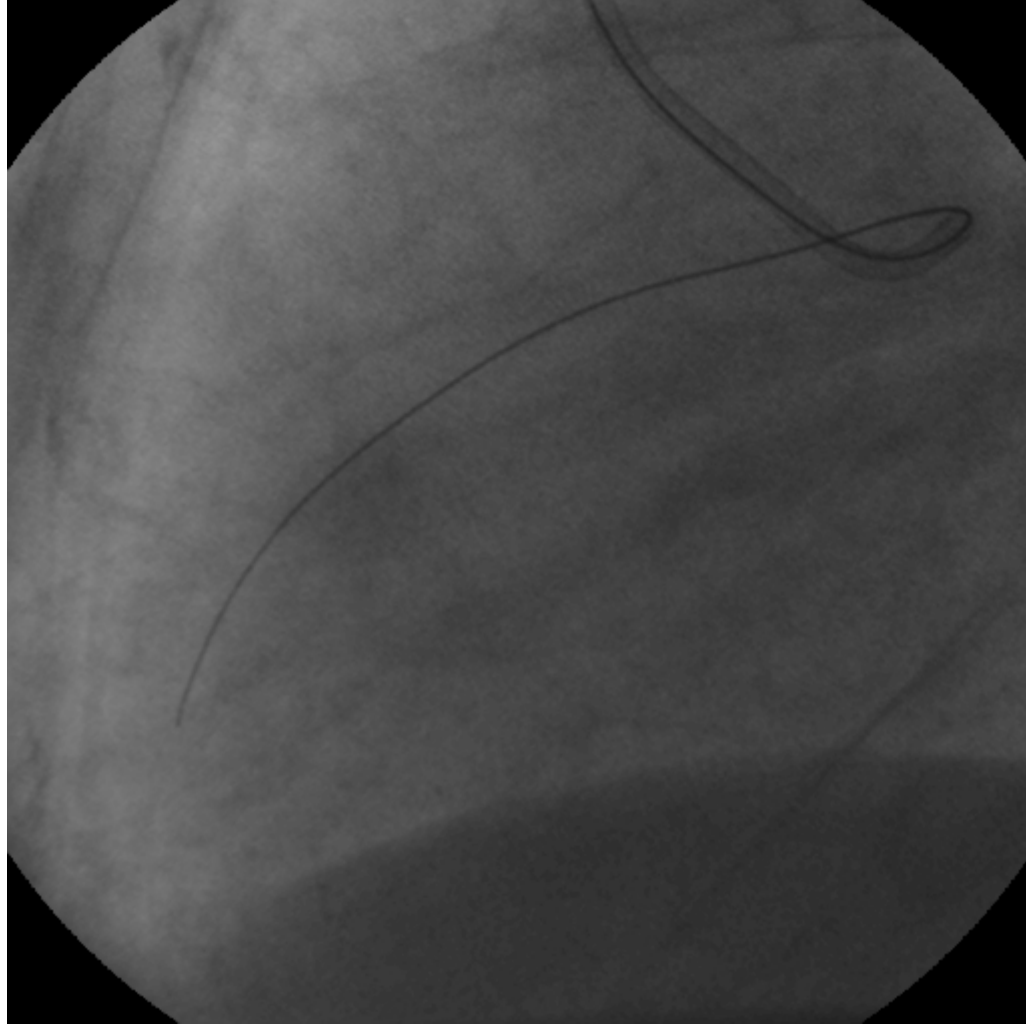


LAD KTO'ya PKG

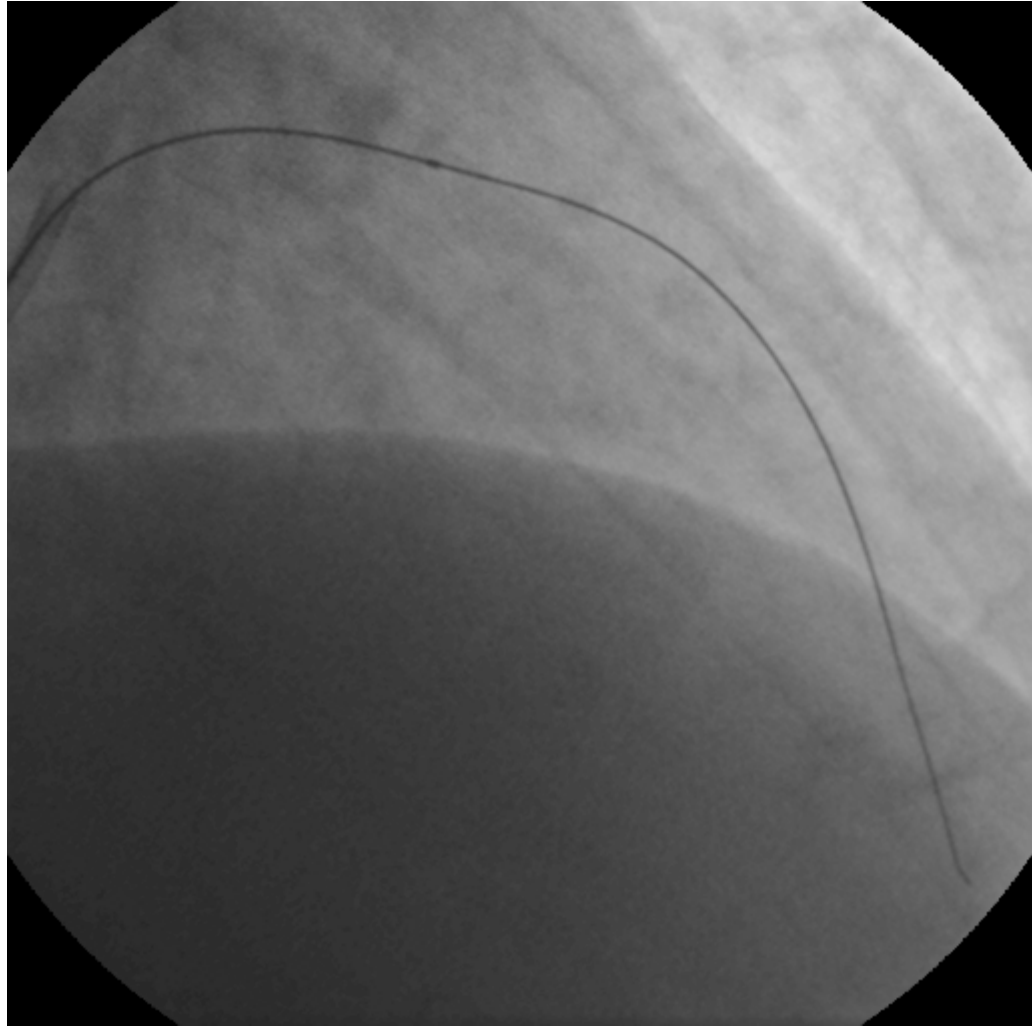
- 7F sol judkins kılavuz kateter
- 1.5X15 mm OTW (Apex Push)
- Başlangıç teli: Miracle 3 ve 12
- Pentrasyon teli: Conquest 9.0

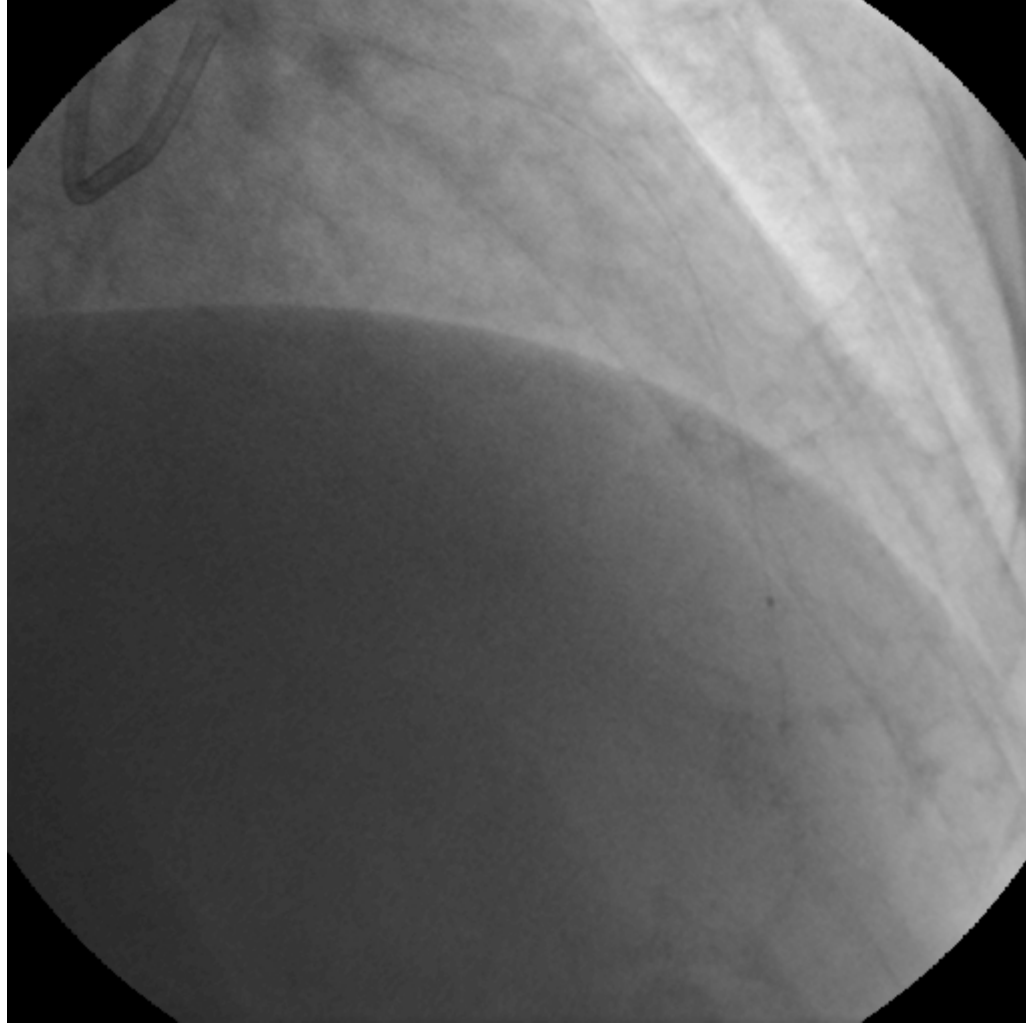






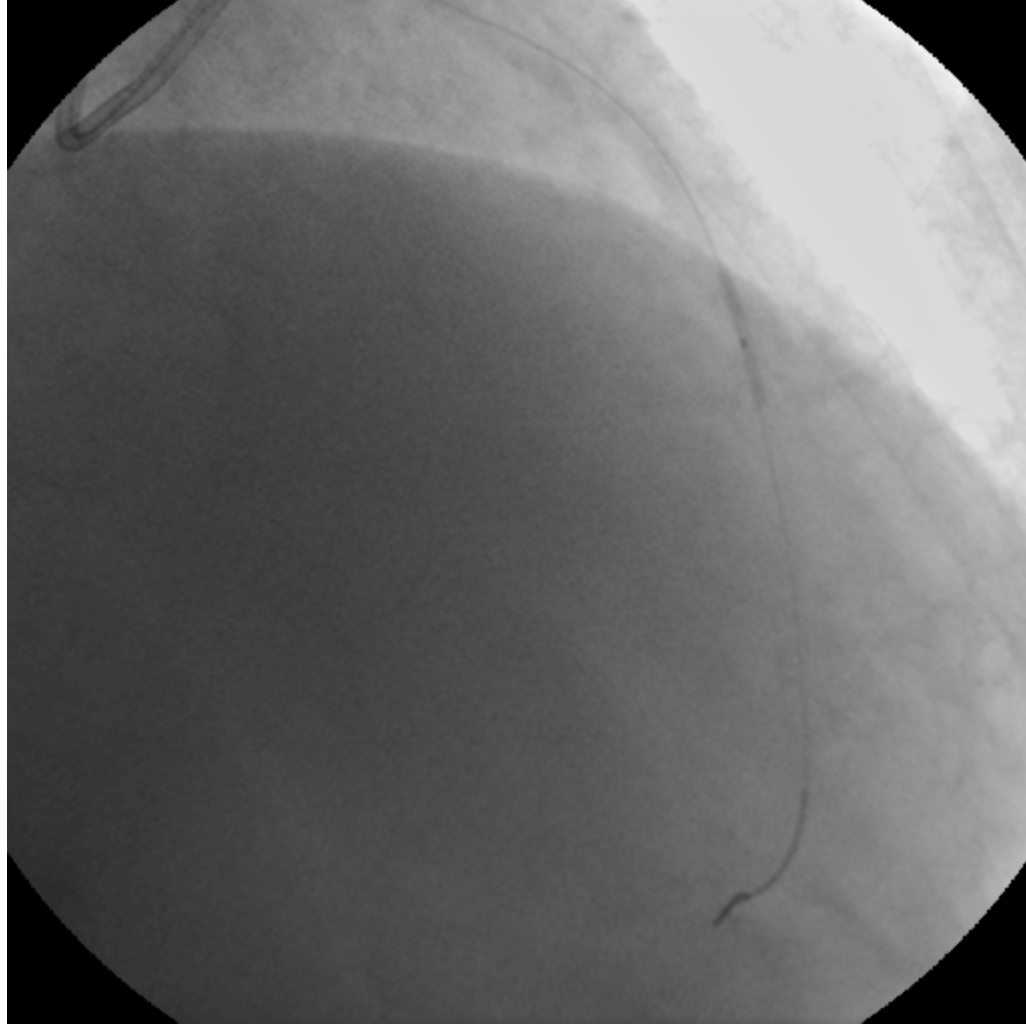
Subintimal seyir



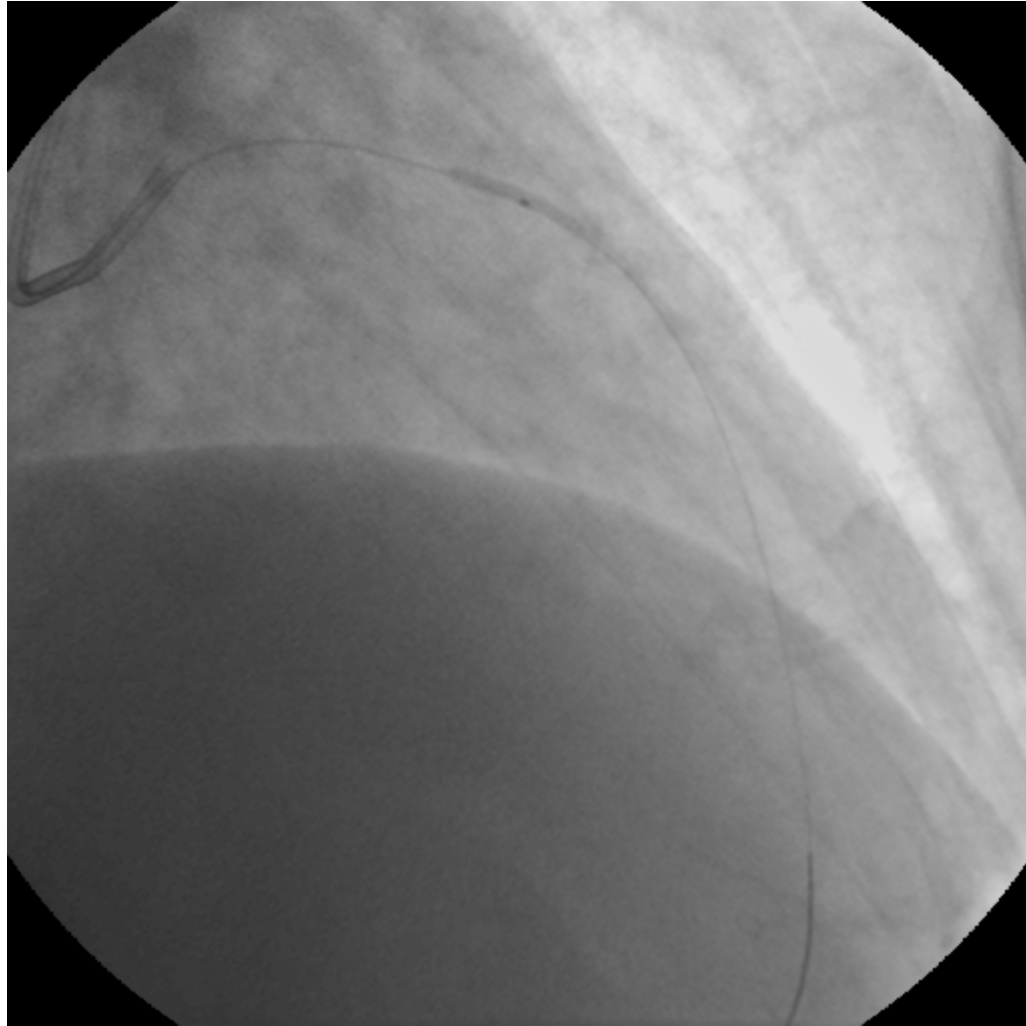


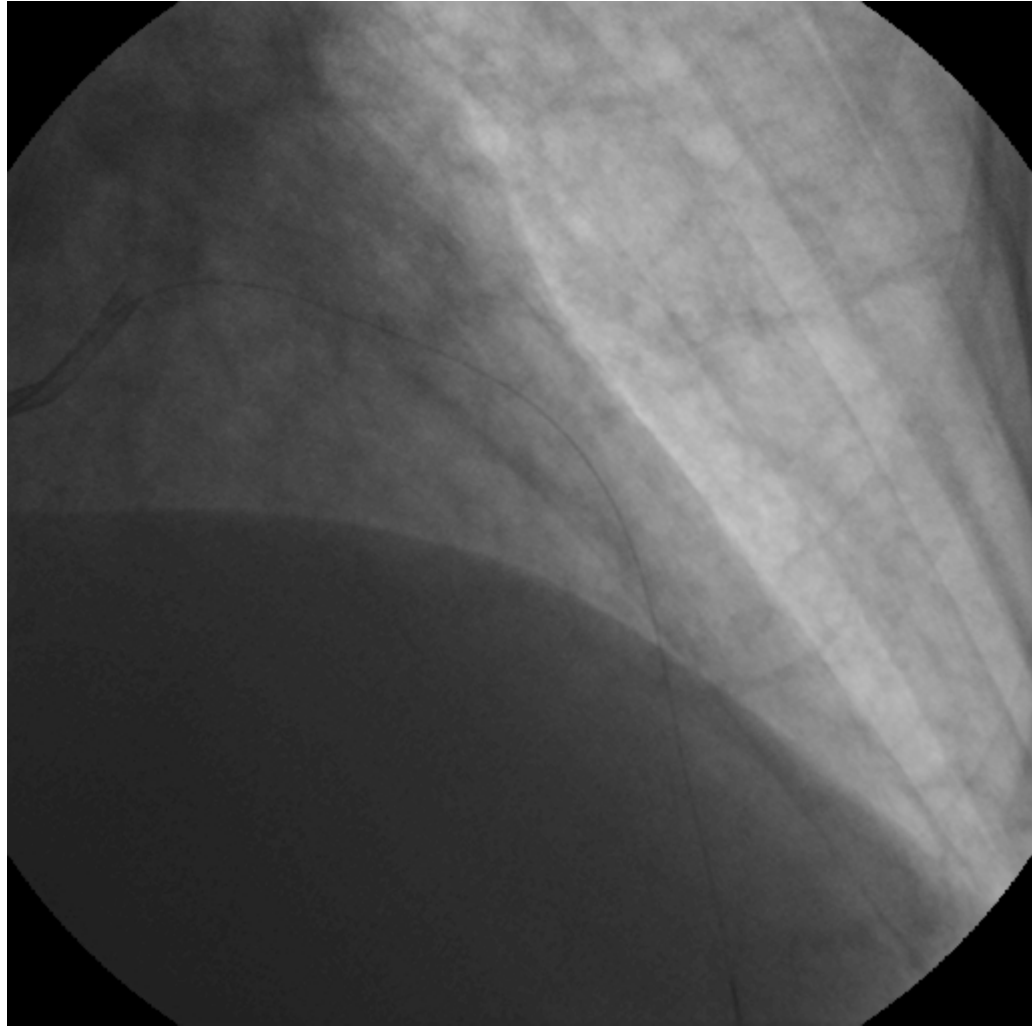
Lümende olduğumuzdan emin olduktan sonra penetrasyon teli floppy tel ile değiştirildi

Predilatasyon

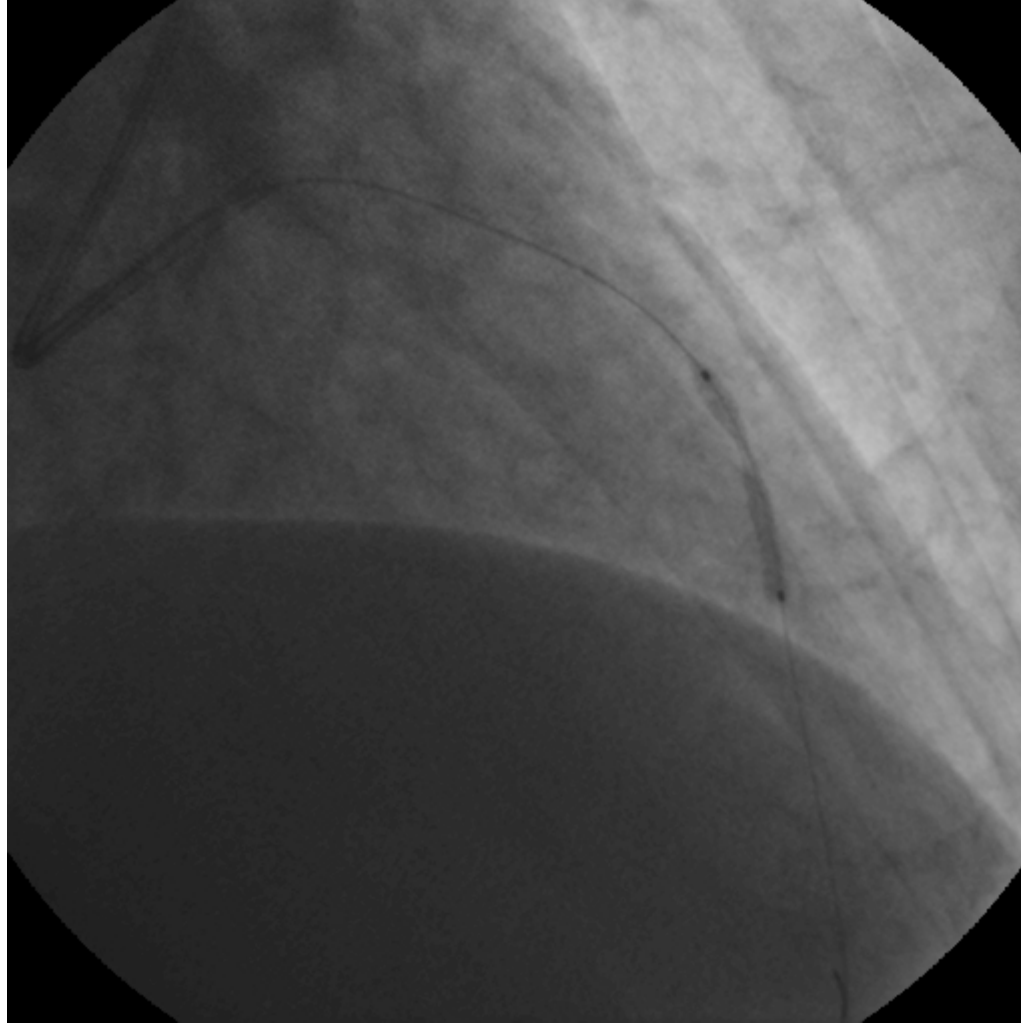


Predilatasyon



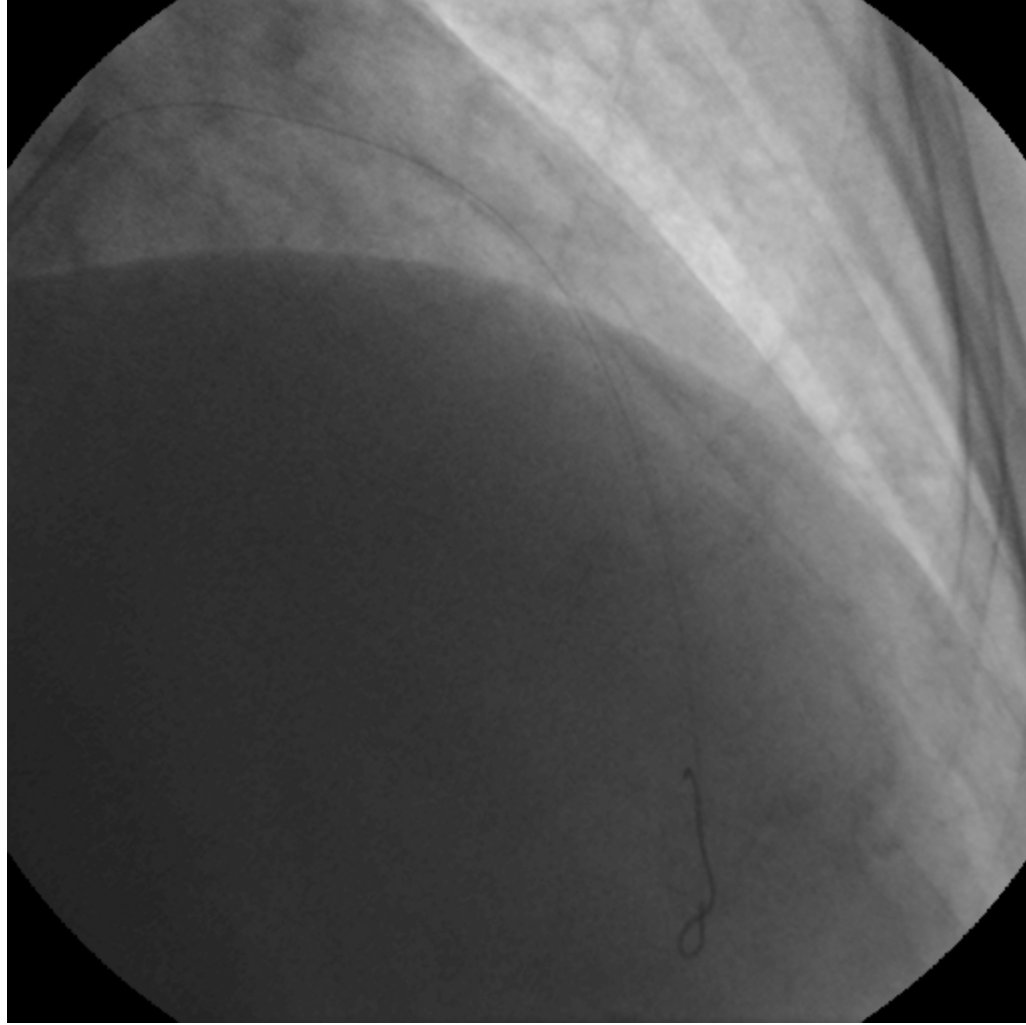


İlk stentin yerleřtirilmesi

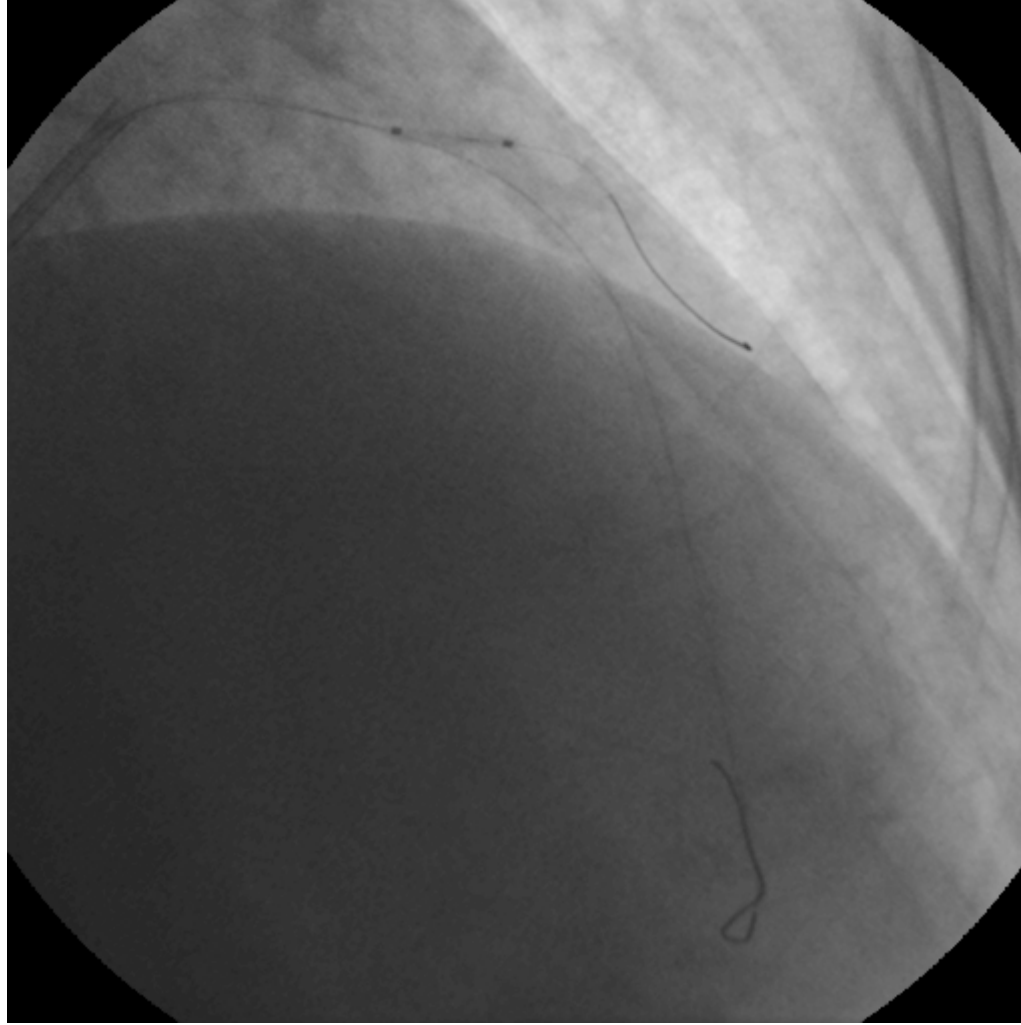


2.5X17 coracto stent

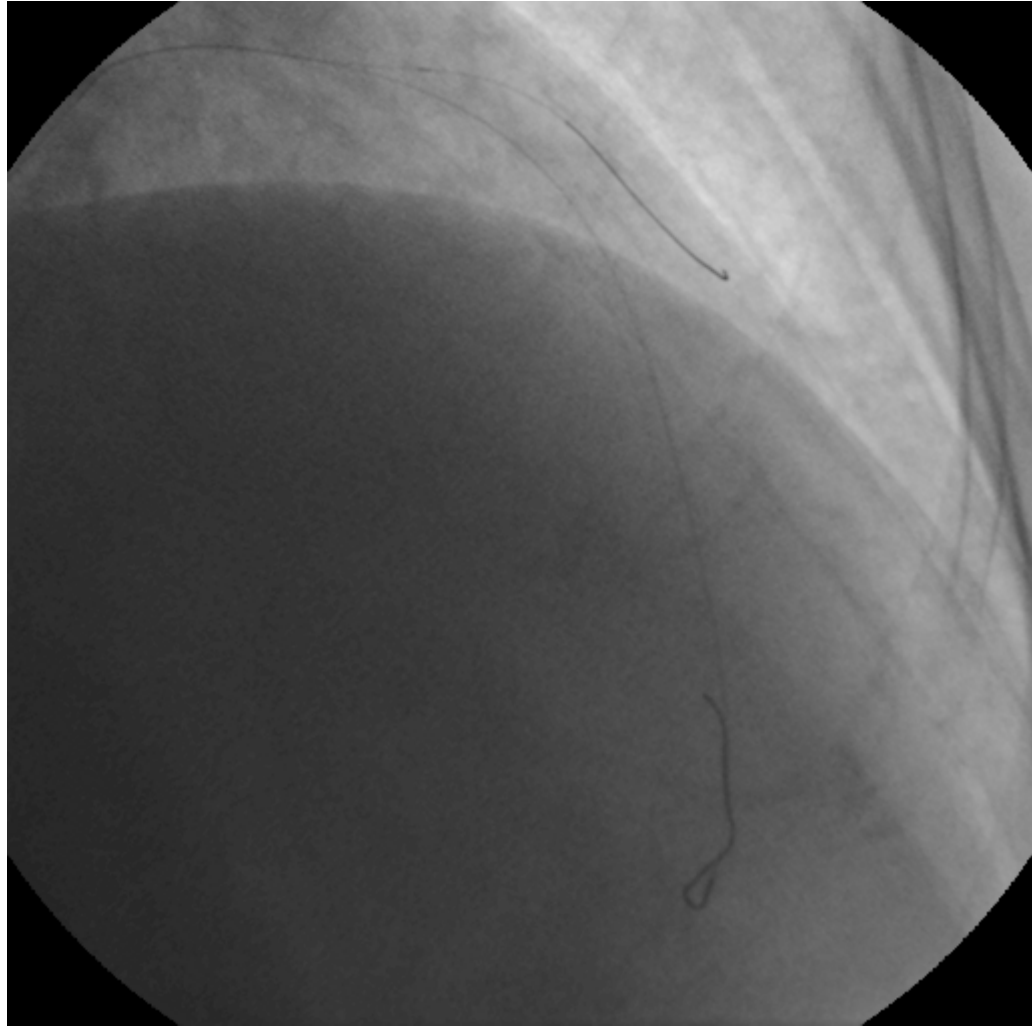
Diyagonal-1 akımı kayboldu



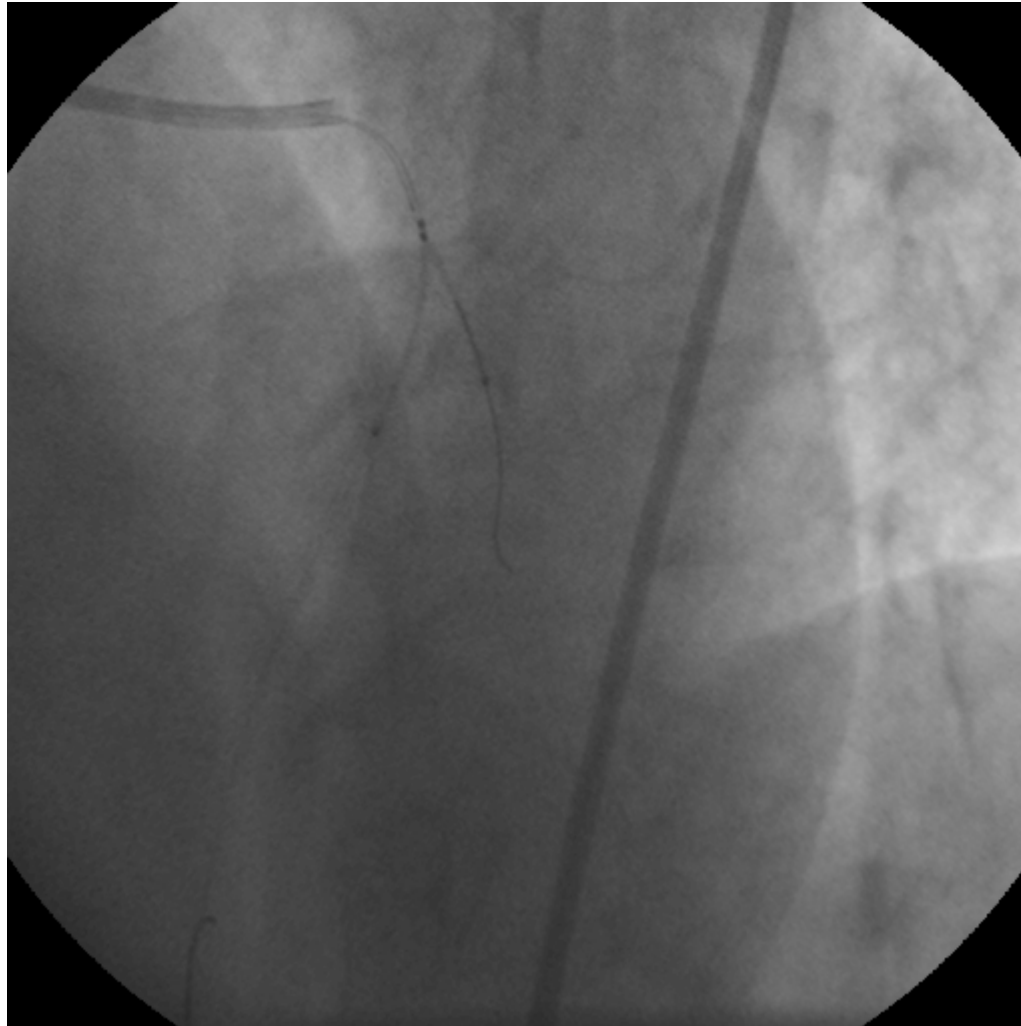
D1'in balon dilatasyon ile rekanalizasyonu



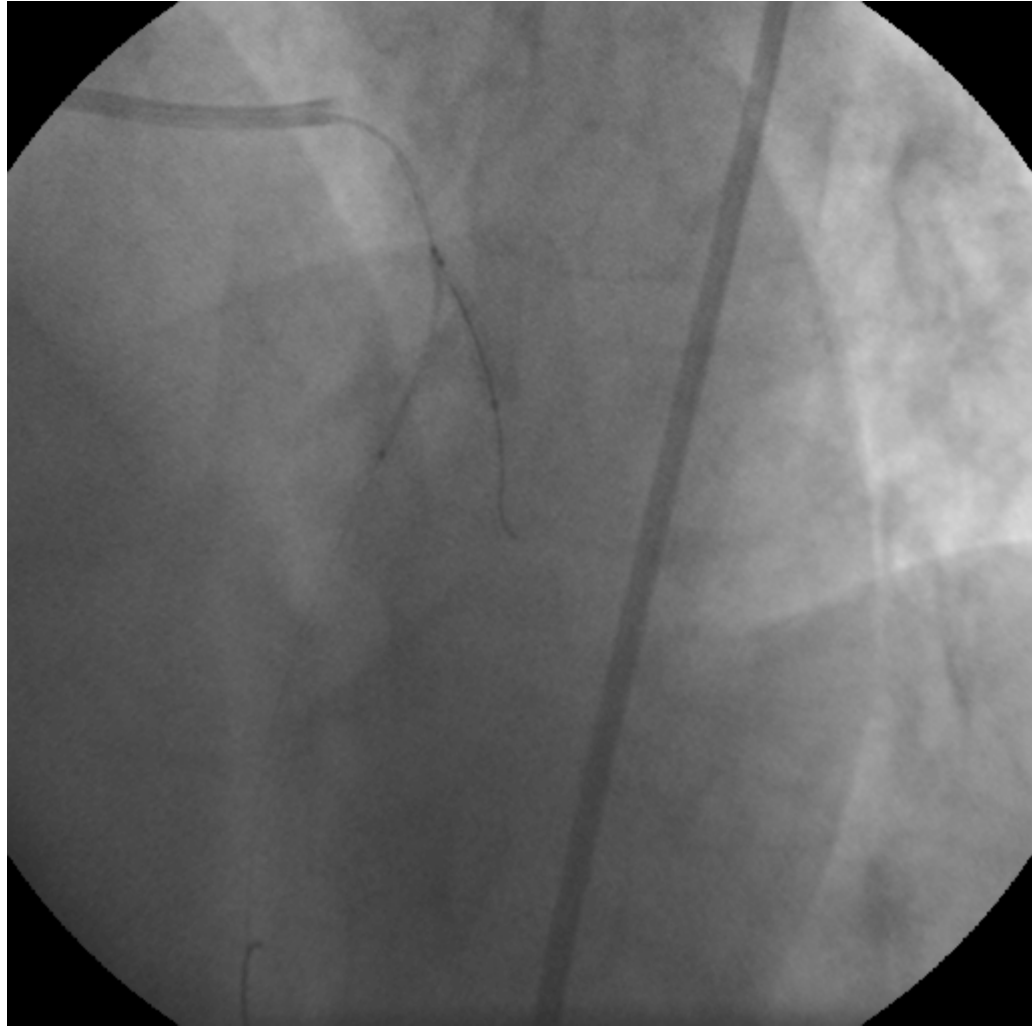
1.5X12 invader PTKA balon

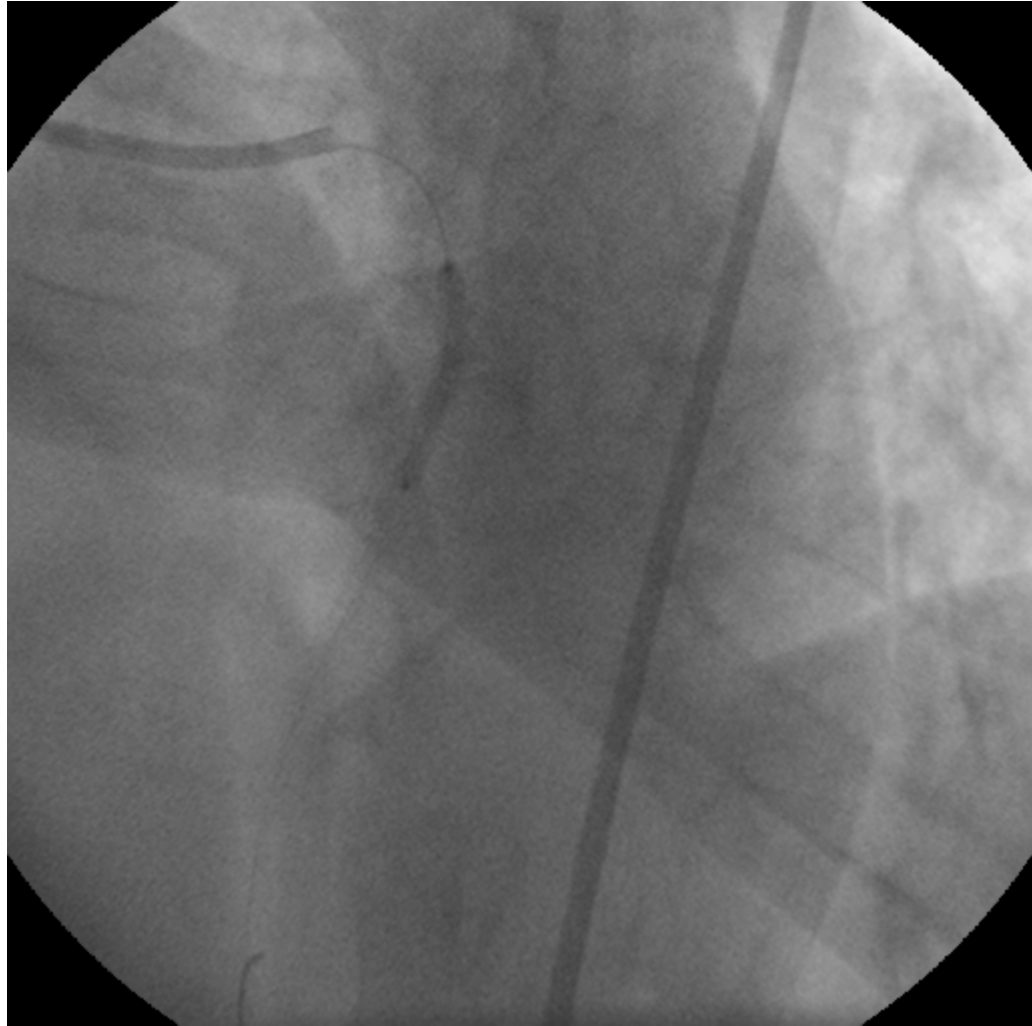


LAD-D1'e "mini-crush" tekniği

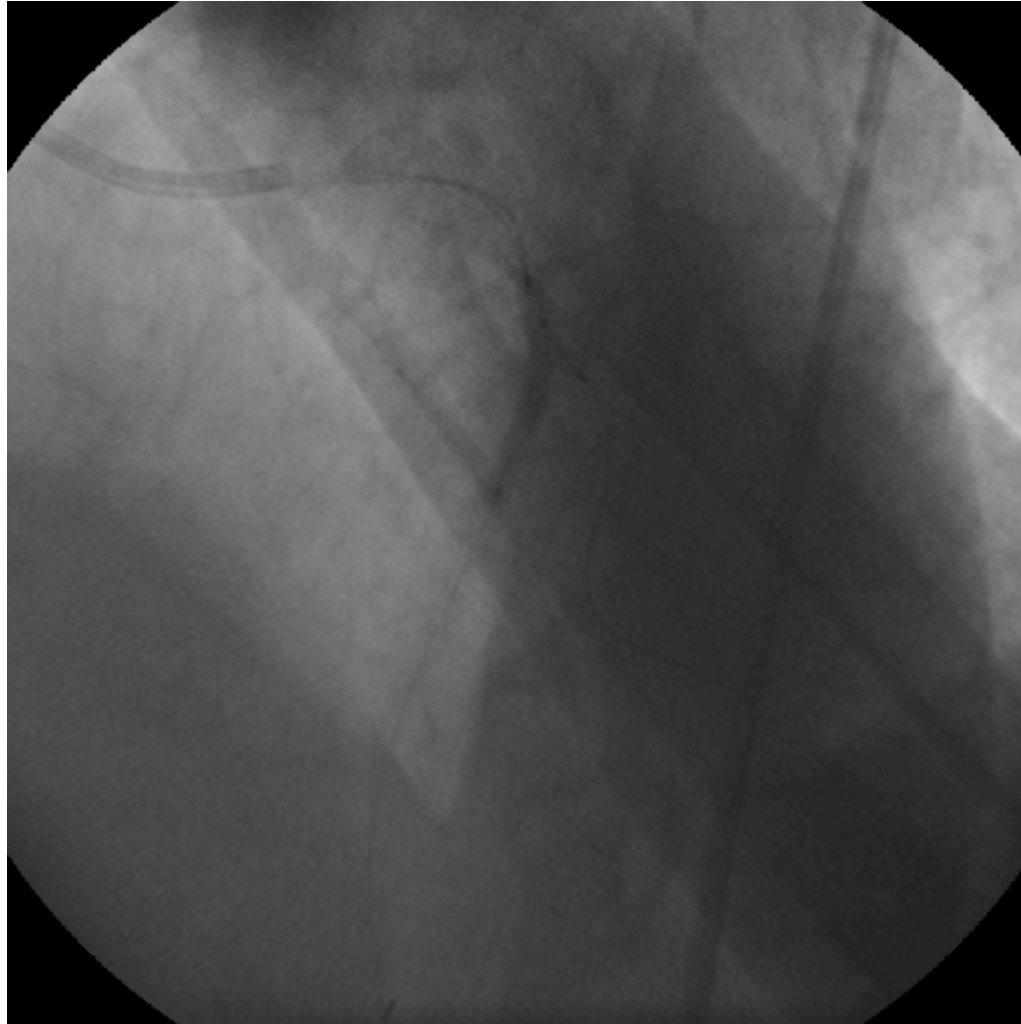


LAD: 2.90X28 mm Coracto stent
D1: 2.5X17 mm Coracto stent

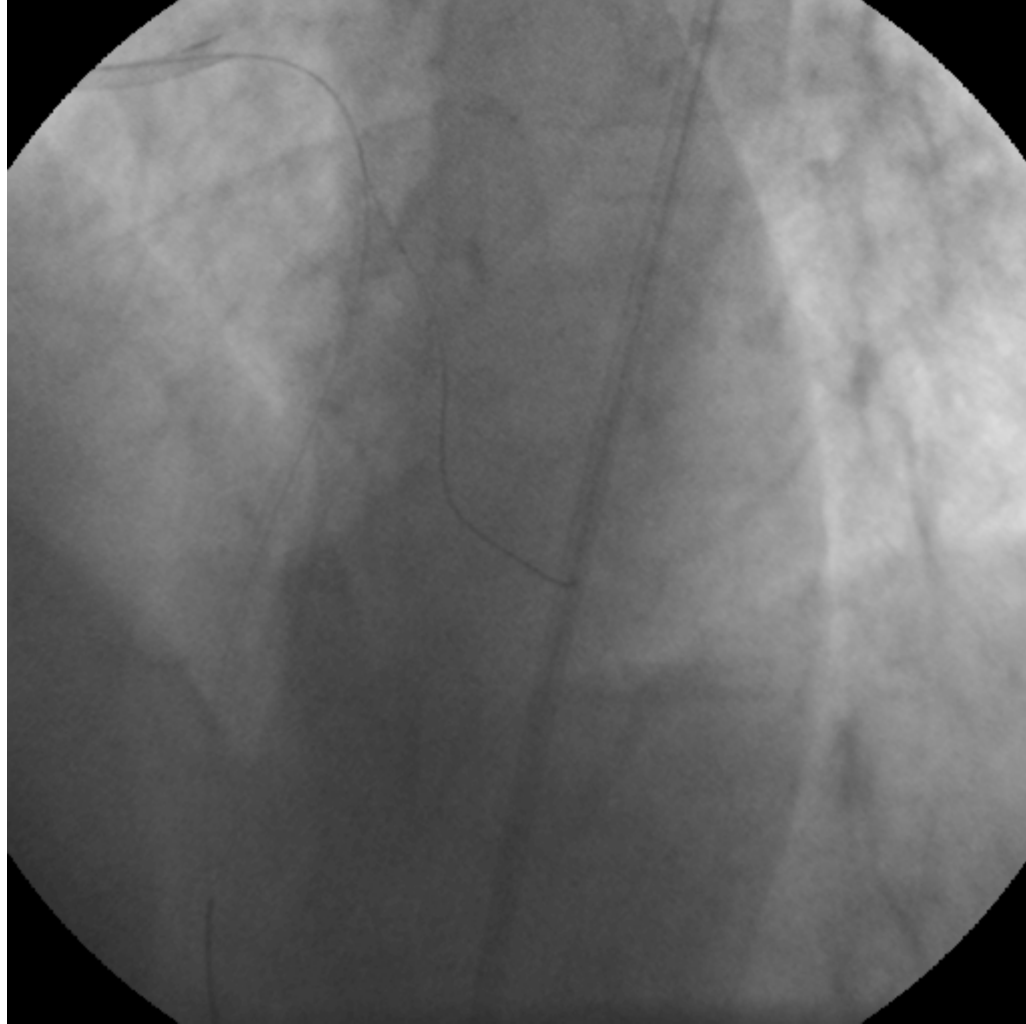




Final Kissing balon



Sonuç



Sonuç

